

# 2026 10th International Conference on Medical and Health Informatics (ICMHI 2026)

Theme: One World: A Decade of Collaborative and Sustainable Medical Informatics  
May 15-17, 2026 | Kyoto, Japan

Organized by



Hosted by



Supported by



[www.icmhi.org](http://www.icmhi.org)

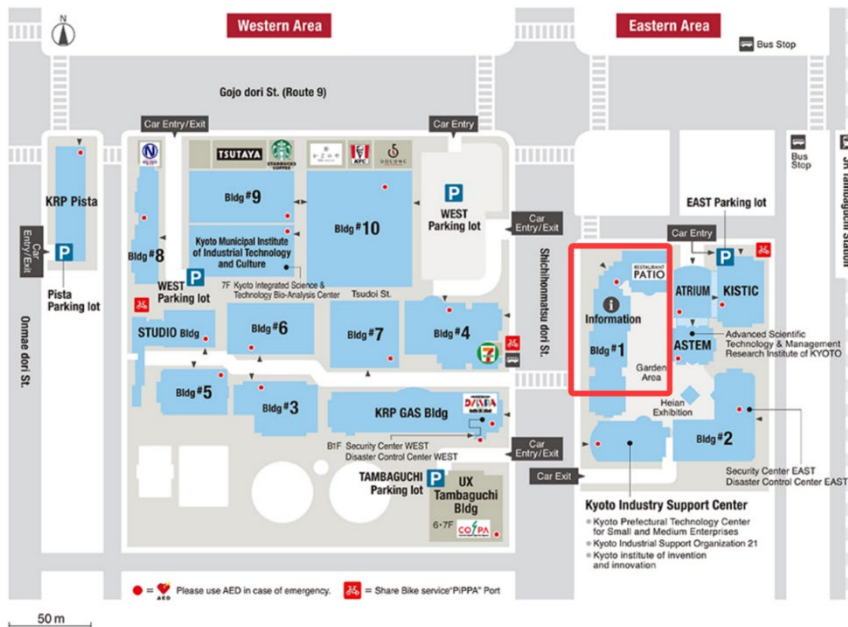
# Conference Venue

## Kyoto Research Park, Kyoto, Japan

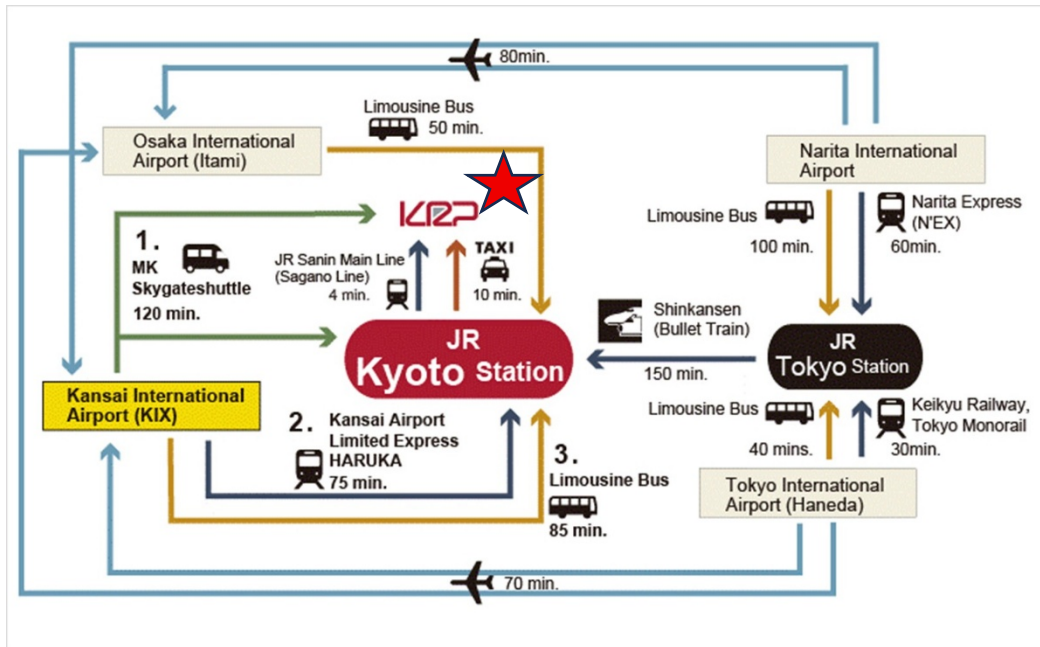
[https://www.krp.co.jp/english/spatial\\_services/convention/map/?open\\_in\\_browser=true](https://www.krp.co.jp/english/spatial_services/convention/map/?open_in_browser=true)

Address: 134 Chudoji Minamimachi, Shimogyo Ward, Kyoto, 600-8813, Japan

〒600-8813 京都府京都市下京区中堂寺南町 134



**\* The organizer will not reserve the accommodation. You are recommended to confirm with the conference secretary for participation mode before you finalize the reservation.**



## Access to Kyoto

### 1. From Kansai International Airport to Kyoto City

#### By Kansai-airport- MK Skygateshuttle

This service takes you directly to your destination. A Shuttle reservation is required 2 days before your arrival date. The Meeting point (MK counter) is located next to Gate H of the airport South Exit. Traveling time is about 120 minutes.

#### By Kansai Airport Limited Express HARUKA, by Japan Railway(JR)

Traveling time to Kyoto Station is 75 minutes. The tickets can be purchased at the station office.

Limousine Bus, by KATE (Kansai Airport Transportation Enterprise)

This bus leaves every 30-40 minutes. Traveling time to JR Kyoto Station is about 85 minutes. The tickets can be purchased from vending machines located near the bus stops.

### 2. From JR Kyoto Station to KRP

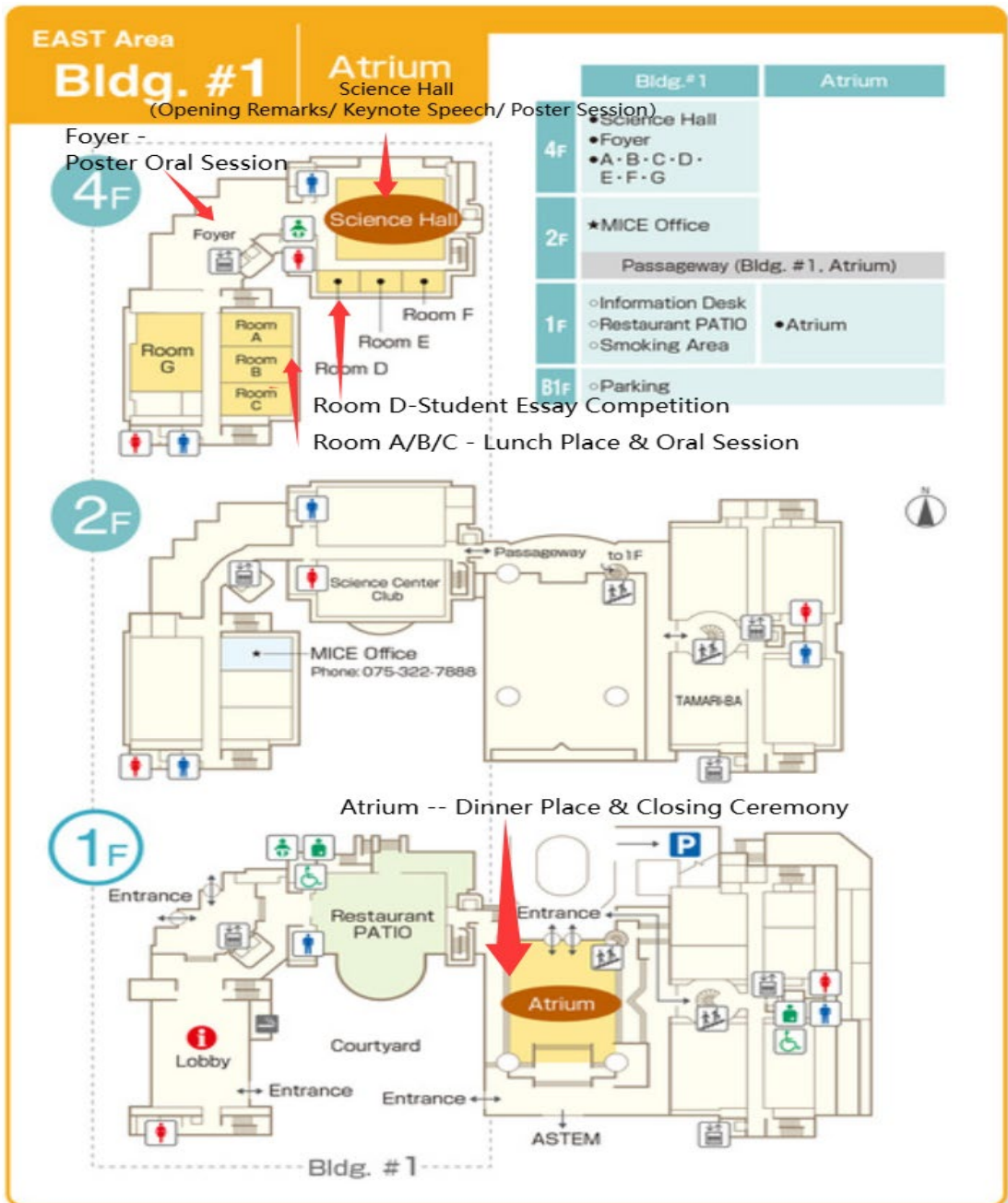
#### By Taxi 10 minutes (Approx. 1,000 JPY)

#### By JR San-in (Sagano) line (Local)

Please get off at the second stop, Tambaguchi Station (4 minutes, 140 JPY). 4 minutes to walk from the station to Kyoto Research Park.

# Conference Rooms Direction

## \*Bldg.#1



\* The organizing committee will not ask delegates to provide credit card information for any purpose. The registration will be completed only via conference system. Please be alert.

# Welcome Address



*Taka-Aki Sato*

Prof. Taka-Aki Sato  
Conference Chair



*Chi-Chang Chang*

Prof. Chi-Chang Chang  
Founding Chair

It is our pleasure to welcome you to the 10th International Conference on Medical and Health Informatics (ICMHI 2026) in Kyoto, Japan. On behalf of the organizing committee, we sincerely thank you for your support and participation.

This year marks the 10th anniversary of ICMHI, under the theme “One World: A Decade of Collaborative and Sustainable Medical Informatics.” Over the past decade, ICMHI has evolved into a global platform connecting academia, industry, and government to advance knowledge and innovation in medical informatics. This milestone reflects our shared belief that healthcare progress is driven by interdisciplinary collaboration across borders. As we celebrate past achievements, we also look ahead to a new era of sustainable development and global co-creation in a rapidly changing world.

In this context, the Society for Asian Medical Decision Science (SAMDS) plays a vital role in fostering interdisciplinary collaboration, advancing high-quality decision-making, and connecting Asia with the global community. Marking its 10th anniversary, the Society is honored to present the Medical Decision Contribution Award to recognize scholars and experts whose work has significantly advanced both research and practice. These awards aim to inspire future generations to build upon this foundation and explore new frontiers in medical decision science and informatics.

We sincerely thank all contributors, organizing committee members, and partner institutions for making this conference possible. We hope this conference will be a rewarding and memorable experience, offering opportunities to reflect on the past decade, to build new collaborations, and to envision the next ten years of innovation together. We wish you an inspiring conference and look forward to your continued participation in future ICMHI events.

# Foreword

It is my pleasure to cordially welcome you to ICMHI 2026, the 10th International Conference on Medical and Health Informatics, this year again in Kyoto, Japan. My congratulations go to the organizers of the SAMDS (Society for Asia Medical Decision Science) conference series, in particular to Professor Chi-Chang Chang as founding chair. I still remember ICIMTH conference in Athens, Greece, when Professor Chang shared his ideas for setting up such a conference series in Asia. It is with great respect to see that his plans became reality!



The theme of this ICMHI conference focuses on *One World: A Decade of Collaborative and Sustainable Medical Informatics*, with the intention to reflect both progress and future direction of medical informatics. Within these days it is in particular of importance that we emphasize and highlight that we are one world. Let us please remember, that everywhere on earth children are born, children, who all should have the opportunity to grow up in safety and dignity and, of course, in good health. As a past president of IMIA, the International Medical Informatics Association, I remember well the discussions on the updating our association's statutes in 2010. As far as I have in mind, it was for all of us in IMIA's General Assembly of importance to have paragraph 2.1, inclusivity, in these statutes: "In order to achieve IMIA's objectives to contribute to the health and quality of life of the people in our world through dissemination and use of informatics for high-quality, efficient health care and public health and for high-quality research in biomedicine and in the health, information and computer sciences, IMIA's members collaborate in a tolerant and peaceful way, transcending nations, cultures, and political or social structures."

May ICMHI 2026 significantly contribute to the health and quality of life of the people in our world through dissemination and use of medical informatics! And may you as participants of this international conference be a role model to collaborate in a tolerant and peaceful way, transcending nations, cultures, and political or social structures!

Prof. Dr. Reinhold Haux, FACMI, FGBHI, FIAHSI, MBWG

Past Director (2007-2017), Peter L. Reichertz Institute for Medical Informatics of TU Braunschweig and of Hannover Medical School, Germany

Past President (2007-2010) of the International Medical Informatics Association

Past President (2018-2020) of the International Academy of Health Sciences Informatics

Past President (2022-2025) of the Braunschweig Scientific Society

# Foreword

I extend my congratulations to the founding chair of this Conference, Professor Chi-Chang Chang, and the SAMDS (Society for Asian Medical Decision Science) for organizing this conference series. As the founding chair of the ICIMTH conference series in Athens, Greece, now in its 24th consecutive year, I proudly recall the presence of Professor Chi-Chang Chang in Athens attending the conferences, keen to learn about those conferences and asking me if it is possible to do something similar in his beloved country and in the region, wishing to spread the knowledge in the field of Biomedical and Health Informatics among his peers and students by establishing a conference series in Asia. I feel very proud of his achievements and very humbled, as in all conference he mentions my name as the honorary president of this series, exemplifying his 'ethos', a very rare jewel of an ethical beacon in the current world!



This year's ICMHI conference theme focuses on 'One World: A Decade of Collaborative and Sustainable Medical Informatics', aiming to reflect on both advancements and future trajectories in medical informatics. We are currently at crucial crossroads in the scientific progression of using the technological advancements to the benefit of healthcare. Harnessing the AI evolution is of utmost importance, as the sirens of technology can make society forget the ethical principles of the Hippocratic Oath in healthcare but also in technological applications. This innovative conference studies the theme of one world, which reminds us of the principles of equity, inclusivity, and health for all.

I wish for the participants to gain the most out of this wonderful and successful international conference by sharing knowledge and experiences, by exchanging ideas, by networking with their colleagues to achieve collaborations, by building bridges between cultures and continents, and, finally, to provide to our students, who are attending the conference, an example of how an international scientific collaboration can achieve great and innovative accomplishments and also become a memorable event to the young generation of our field of Medical and Health Informatics.

*John Mantas*

Professor Emeritus John Mantas, PhD, FGBHI, H.M.RAMS, FACMI, FEFMI, FIAHSI

Director (1996-2022) of Health Informatics Laboratory, National and Kapodistrian University of Athens

Dean (2001-2005) of Faculty of Nursing, National and Kapodistrian University of Athens

Vice President /Rector (2008-2010) of the Cyprus University of Technology

President (2010-2012) of European Federation for Medical Informatics (EFMI)

Vice President (2012-2014) of the International Medical Informatics Association (IMIA)

Chair (2018-today) of the Accreditation and Certification Committee of EFMI

Chair (2013-today) of the Annual International Conference ICIMTH

# Foreword

**A Decade of Excellence and the Path Toward Sustainable Health Informatics** It is a profound honor to welcome you to the 10th International Conference on Medical and Health Informatics (ICMHI 2026). As we gather in the historic city of Kyoto, we celebrate not only a decade of academic rigor but also the enduring spirit of a community committed to transforming global healthcare through technology.



## **A Legacy of Resilience**

Since its founding in 2017 at Chung-Shan Medical University in Taichung, Taiwan, ICMHI has served as a vital bridge between clinical practice and computational excellence. Under the visionary leadership of our Founding Chair, Professor Chi-Chang Chang, this conference has maintained an unbroken record of exchange. Even during the global challenges of 2020–2022, our community demonstrated that progress in medical informatics is a global necessity that cannot be interrupted.

## **One World: Collaborative and Sustainable Progress**

Our theme this year, "One World: A Decade of Collaborative and Sustainable Medical Informatics," captures the essence of our era. In a world increasingly driven by Artificial Intelligence, ubiquitous data, and shifting demographic needs, sustainability is no longer optional—it is the mandate. We are moving beyond isolated innovations toward integrated systems that serve human civilization equitably and with foresight. The scale of this year's gathering marks a significant milestone:

- **638 contributing authors**
- Representation from **5 continents and 38 countries**

This global diversity ensures that the frontiers we explore—from clinical decision support to health data standards—remain robust and inclusive.

## **An Invitation to the Frontier**

Kyoto, where tradition meets innovation, is the perfect setting to push the boundaries of our field. I encourage you to engage in this intellectual exchange and forge partnerships that will define our next decade.

I extend my deepest gratitude to the program committee, our reviewers, and especially the authors whose passion continues to drive this field forward. Let us work together to advance the future of global health.

*Chien-Lung Chan*

Chien-Lung Chan

Distinguished Professor, Department of Information Management

Yuan Ze University

# Foreword

It is a great pleasure for me to contribute a few words on the occasion of the 10th anniversary of ICMHI 2026 in Kyoto, Japan.

Over the past decade, ICMHI has grown into a valuable international platform for researchers, academics, and professionals working in medical informatics, digital health, healthcare management, and related fields. The conference has played an important role in promoting collaboration, knowledge sharing, and interdisciplinary dialogue across countries and institutions.



The theme of this year's conference, "**One World: A Decade of Collaborative and Sustainable Medical Informatics**," is particularly timely and meaningful. It reflects the achievements of the past ten years while also emphasizing our shared responsibility to shape the future of healthcare through innovation, data, artificial intelligence, and sustainable digital transformation.

I would like to sincerely congratulate Prof. Chi-Chang Chang and the organizing committee for their dedication and valuable contributions to the continued development of ICMHI. I am confident that ICMHI 2026 will be a successful and inspiring meeting for all participants.

With my congratulations and best wishes,



**Prof. Dr. Dilaver Tengilimoglu**  
**Faculty of Business**  
**Head of Business**  
**Atılım University, and**  
**Co-Chair, Asian Medical Award Committee**  
**Society for Asian Medical Decision Science**



Society for Asia  
Medical Decision Science

# SAMDS

## Strategic Planning

### White Paper 2026-2028

Advancing Health Through Decision Science in Asia



#### FIVE STRATEGIC DOMAINS



#### RESEARCH

Advance methodological research and innovation to generate impactful evidence



#### EDUCATION

Cultivate decision science talent and promote interdisciplinary learning and capacity building



#### GOVERNANCE

Strengthen governance and sustainability to ensure transparency, efficiency and value for members



#### PARTNERSHIPS

Build diverse partnerships to foster collaboration among academia, industry and institutions



#### POLICY

Leverage decision science evidence to inform policy and improve health systems

SCIENCE • COLLABORATION • IMPACT

## OUR VISION FOR 2030

To be the most influential decision science society in Asia, leading research, education and policy innovation to improve healthcare decision-making and advance population health.

# 2026 FOUR PRIORITIES

← → FOUR PRIORITIES FOR 2026 ← →

- 1

### STRENGTHEN RESEARCH & DATA ECOSYSTEM

Advance high-quality research, real-world data utilization, and methodological innovation.
- 2

### EXPAND EDUCATION & TALENT DEVELOPMENT

Develop diverse programs and certification pathways to nurture the next generation of decision science leaders.
- 3

### DEEPEN PARTNERSHIPS & GLOBAL ENGAGEMENT

Expand regional and international collaborations to enhance SAMDS visibility and impact.
- 4

### STRENGTHEN POLICY DIALOGUE & SOCIAL IMPACT

Engage with policymakers and stakeholders to promote evidence-informed policies.

JOIN THE COMMUNITY

Let's advance decision science together for a healthier Asia!

[www.samds.org](http://www.samds.org)

[LinkedIn](https://www.linkedin.com/company/samds)

# AGENDA

<b>Conference Venue</b> .....	2
<b>Welcome Address</b> .....	5
<b>Foreword</b> .....	6
<b>Presentation Instructions</b> .....	14
<b>Brief Schedule for Conference</b> .....	17

## May 15 (Friday)

<b>Onsite Registration &amp; Materials Collection</b> .....	17
<b>Online Test</b> .....	17

## May 16 (Saturday)

<b>Opening Remarks</b> .....	25
<b>Keynote Speaker (Prof. Hitoshi Nakagama)</b> .....	26

### Poster Sessions

Poster Session 1: Machine Learning for Clinical Data Analysis (I) .....	28
Poster Session 2: Machine Learning for Clinical Data Analysis (II) .....	30
Poster Session 3: Immersive Medicine and Generative AI in Health.....	32
Poster Session 4: Emerging Clinical Insights in Surgery and Patient Safety.....	34
Poster Session 5: Innovations in Health Information Systems.....	36
Poster Session 6: Digital Innovations in Care Delivery.....	38

### Oral Sessions

Session 1: Large Language Models and Foundation AI at the Bedside.....	40
Session 2: Risk Prediction and Digital Health Equity.....	42
Session 3: Intelligent Imaging and Immersive Technologies.....	44
Session 4: Multimodal AI for Clinical Risk Stratification.....	46
Session 5: AI-Enhanced Rehabilitation and Nursing Care Services.....	48
Session 6: Data-Driven Health System Governance.....	50
Session 7: Machine Learning for Clinical Data Analysis.....	52
Session 8: Computational Methods for Precision Medicine.....	54
Session 9: AI-Enabled Early Detection and Diagnosis of Diseases.....	56

### Student Essay Competitions

Undergraduate Session.....	58
Graduate Session.....	60
PhD Sessions.....	62

### Poster Oral Sessions

Session 1: Earlier Medicine Using Machine Learning and Multimodal Techniques.....	64
---	----

Session 2: Country-Specific Health Informatics and Epidemiology.....	66
Session 3: From Bench to Bedside with GPT and Learning Health Systems.....	68
Session 4: Human-Centered AI and mHealth Design.....	70
Session 5: Smarter Care through Design and Spatial Analytics.....	72
Session 6: Immersive AI for Next-Generation Patient Care.....	74
Session 7: Digital Health and Health Services Management.....	76

## May 17 (Sunday)

### Online Session

Session: Frontiers in Patient-Centric Decision Intelligence .....	78
---	----

<b>Conference History</b> .....	82
---------------------------------	----

<b>One Day Visit</b> .....	84
----------------------------	----

# Instructions for Oral Presentations

## Devices Provided by the Conference Organizer:

Laptop Computer (MS Windows Operating System with MS PowerPoint and Adobe Acrobat Reader)

Digital Projectors and Screen

Laser Sticks

## Materials Provided by the Presenters:

PowerPoint or PDF Files (Files should be copied to the Conference laptop at the beginning of each Session.)

## Duration of each Presentation

Keynote Speech: about 35 Minutes of Presentation and 5 Minutes of Question and Answer

Regular Oral Presentation: about 10 Minutes of Presentation and 2 Minutes of Question and Answer.

# Instructions for Poster Presentations

## Materials Provided by the Conference Organizer:

The place to put poster

## Materials Provided by the Presenters:

Home-made Posters

Poster size is A1, it should be vertical

Load Capacity: Holds up to 0.5 kg

## Duration of each Presentation

Poster presentation: about 3 Minutes of Presentation and 2 Minutes of Question and Answer.

***Poster Session: There is Q&A part for all posters, so each presenter is required to stand in front of the poster for interaction with other participants.***

# Instructions for Selected poster oral presentation

## Materials Provided by the Conference Organizer:

The monitor will be used for poster oral presentation.

## Materials Provided by the Presenters:

Please send the soft copy of your poster to the conference secretary before the conference.

## Duration of each Presentation

Selected poster oral presentation: about 3 Minutes of Presentation and 2 Minutes of Question and Answer.

## Dress code

Please wear formal clothes or national representative of clothing.

# Instructions for Online Presentations

### ➤ Time Zone

The time shown in this schedule is **Greenwich Mean Time+9 (GMT+9)**.

### ➤ Equipment Provided by the Presenters

1. A computer with an internet connection (wired connection recommended)
2. USB plug-in headset with a microphone (recommended for optimal audio quality)
3. Webcam (optional): built-in or USB plug-in

### ➤ Environment requirement

1. Quiet Location and Proper lighting
2. Stable Internet Connection
3. Suitable Background

### ➤ Duration of each Presentation

Regular Oral Presentation: about 10 Minutes of Presentation and 2 Minutes of Question and Answer.

## How to use ZOOM

**Step 1:** Download Zoom from the link: <https://zoom.us/download>

**China Mainland Users:** <https://www.zoom.com.cn/download>

**Step 2:** Sign up an account.

**Step 3:** Set up the languages and do some basic test.

**Step 4:** Get familiar with the basic functions: Rename, chat, raise hands, and screen share, etc.

1. **Rename:** Before you enter the conference room, please change your name to Paper ID + Name
2. **Chat and raise your hand:** During the session, if you have any questions about the operation of zoom, please let us know by clicking “raise your hands” and use “chat” to communicate with conference secretary.

During the Question section, if you have any questions about keynote speaker or authors, you can also click “raise your hands” or “chat”

3. **Share Screen:** Please open your power point first, and then click “share screen” when it’s your turn to do the presentation.

**Notes:** How to join the conference online.

1. Find your paper ID and suitable meeting ID on the conference program.
2. Open the ZOOM, click the join, paste the meeting ID, then you can join the conference.
3. Click the stop share after you finish your presentation.

# Brief Schedule of Conference

May 15, 2026   Friday		
Time	Arrangement	Venue
<b>Onsite</b>		
10:00-17:00	Onsite Registration & Materials Collection	ROOM D
<b>Online (GMT+9)</b>		
11:00-12:05	<b>Online Test:</b> BM0202, BM0029, BM0217, BM0214, BM0015, BM0176, BM0054, BM0164, BM0060, BM0083, BM0178, BM0084, BM0209	<b>Meeting ID:</b> <b>865 4301 2912</b>
May 16, 2026   Saturday		
Time	Arrangement	Venue
<b>Onsite</b>		
09:30-10:00	<b>Opening Remarks</b> Prof. Chi-Chang Chang, Chung-Shan Medical University, Taiwan Prof. Taka-Aki Sato, University of Tsukuba, Japan Superintendent Prof. Ming-Che Tsai, Chung Shan Medical University Hospital, Taiwan Prof. Tetsuya Sakurai, University of Tsukuba, Japan Prof. Wen-Wei Chang, Chung-Shan Medical University, Taiwan	<b>Science Hall</b> <b>Zoom Meeting:</b> <a href="https://us02web.zoom.us/j/86543012912">https://us02web.zoom.us/j/86543012912</a>
10:00-10:40	<b>Keynote Speech</b> Prof. Hitoshi Nakagama President Hitoshi Nakagama   Japan Agency for Medical Research and Development (AMED) / Honorary President, National Cancer Center (NCC)	<b>ID: 865 4301 2912</b>
	<b>Moderator</b> Superintendent Prof. Ming-Che Tsai, Chung Shan Medical University Hospital, Taiwan <b>Q&amp;A:</b> Prof. Wen-Wei Chang, Chung-Shan Medical University, Taiwan	

10:40-10:50	<b>Award Ceremony for Medical Decision Science</b>	Science Hall
10:50-11:00	<b>The Inaugural Ceremony of the SAMDS Youth Forum</b>	
11:00-11:10	<b>Group Photo &amp; Coffee Break</b>	
11:10-12:00	<p><b>Poster Session 1: Machine Learning for Clinical Data Analysis (I)</b>                      7 presentations: BM0033-A, BM0145-A, BM0146-A, BM0147-A, BM0149-A, BM0156, BM0128-A  <b>Chaired by:</b> Dr. Christoph Aigner, Research Group for Industrial Software, Technische Universität Wien, Austria</p> <p><b>Poster Session 2: Machine Learning for Clinical Data Analysis (II)</b>                      6 presentations: BM0004-A, BM0048, BM0124, BM0126-A, BM0150-A, BM0181-A  <b>Chaired by:</b> Dr. Xiucai Ye, University of Tsukuba, Japan</p> <p><b>Poster Session 3: Immersive Medicine and Generative AI in Health</b>                      4 presentations: BM0059, BM0133, BM0140-A, BM0197  <b>Chaired by:</b> Dr. Ting-Ying Chien, Yuan Ze University, Taiwan</p>	Science Hall
	<p><b>Poster Session 4: Emerging Clinical Insights in Surgery and Patient Safety</b>                      7 presentations: BM0001-A, BM0003-A, BM0005-A, BM0006-A, BM0110-A, BM0131-A, BM0021-A  <b>Chaired by:</b> Advisor Lai-Shiun Lai, IT Department of Taichung Veterans General Hospital, Taiwan</p>	
	<p><b>Poster Session 5: Innovations in Health Information Systems</b>                      7 presentations: BM0027-A, BM0052-A, BM0136-A, BM0155-A, BM0177-A, BM0182-A, BM0201-A  <b>Chaired by:</b> Prof. Chien-Lung Chan, Yuan Ze University, Taiwan</p>	
	<p><b>Poster Session 6: Digital Innovations in Care Delivery</b>                      8 presentations: BM0135, BM0139, BM0142, BM0154-A, BM0180-A, BM0211, BM0230-A, BM0236-A  <b>Chaired by:</b> Dr. I-Pin Chang, National Taiwan University of Science and Technology, Taiwan</p>	

**Note: There is Q&A part for all posters, so each presenter is required to stand in front of the poster for interaction with other participants. Best poster presentation would be chosen by the chair.**

12:00-13:00	<b>Lunch</b>	<b>ROOM A/B/C</b>
-------------	--------------	-------------------

<b>Parallel Sessions</b>		
	<p><b>Oral Session 1: Large Language Models and Foundation AI at the Bedside</b>                      5 presentations: BM0050, BM0115, BM0161, BM0162, BM0240-A  <b>Chaired by:</b> Advisor Lai-Shiun Lai, IT Department of Taichung Veterans General Hospital, Taiwan</p>	<b>ROOM A</b>
13:00-14:12	<p><b>Oral Session 2: Risk Prediction and Digital Health Equity</b>                      6 presentations: BM0009, BM0055, BM0119-A, BM0204-A, BM0233, BM0234  <b>Chaired by:</b> Prof. Tian-Fu Lee, Tzi Chi University, Taiwan</p>	<b>ROOM B</b>
	<p><b>Oral Session 3: Intelligent Imaging and Immersive Technologies</b>                      4 presentations: BM0078, BM0080, BM0165, BM0175  <b>Chaired by:</b> Dr. Ting-Ying Chien, Yuan Ze University, Taiwan</p>	<b>ROOM C</b>
14:12-15:24	<p><b>Oral Session 4: Multimodal AI for Clinical Risk Stratification</b>                      6 presentations: BM0102-A, BM0122, BM0143-A, BM0203-A, BM0226-A, BM0239-A  <b>Chaired by:</b> Prof. Yen-Wei Chu, National Chung Hsing University, Taiwan</p>	<b>ROOM A</b>
	<p><b>Oral Session 5: AI-Enhanced Rehabilitation and Nursing Care Services</b>                      5 presentations: BM0037-A, BM0039, BM0227-A, BM0235-A, BM0241  <b>Chaired by:</b> Dr. Hsien-Wei Ting, Taipei Hospital, Ministry of Health and Welfare, Taiwan</p>	<b>ROOM B</b>

14:12- 15:24	<p><b>Oral Session 6: Data-Driven Health System Governance</b> 6 presentations: BM0024-A, BM0049-A, BM0081, BM0108-A, BM0168, BM0187-A <b>Chaired by:</b> Prof. Wen-Wei Chang, Chung-Shan Medical University, Taiwan</p>	ROOM C
15:24- 16:24	<p><b>Oral Session 7: Machine Learning for Clinical Data Analysis</b> 5 Presentations: BM0047, BM0053, BM0088, BM0123, BM0206-A <b>Chaired by:</b> Prof. Yi-Ju Tseng, National Yang Ming Chiao Tung University, Taiwan</p>	ROOM A
	<p><b>Oral Session 8: Computational Methods for Precision Medicine</b> 5 Presentations: BM0245-A, BM0246-A, BM0247-A, BM0248-A, BM0249-A <b>Chaired by:</b> Dr. Xiucai Ye, University of Tsukuba, Japan</p>	ROOM B
	<p><b>Oral Session 9: AI-Enabled Early Detection and Diagnosis of Diseases</b> 5 Presentations: BM0045, BM0075, BM0079, BM0104, BM0152-A <b>Chaired by:</b> Prof. Wen-Wei Chang, Chung-Shan Medical University, Taiwan</p>	ROOM C
<b>Parallel Sessions</b>		
12:00- 12:48	<p><b>Student Essay Competition Session 1</b> Undergraduate session: 4 presentations: BM0186, BM0224, BM0225, BM0244 <b>Chaired by:</b> Prof. Hao-Yun Kao, Kaohsiung Medical University, Taiwan Dr. William.Yu Chung Wang, University of Waikato, New Zealand</p>	Room D
12:48- 13:24	<p><b>Student Essay Competition Session 2</b> Master Session: 3 presentations: BM0058, BM0242, BM0243 <b>Chaired by:</b> Dr. Xiucai Ye, University of Tsukuba, Japan Prof. Yen-Wei Chu, National Chung Hsing University, Taiwan</p>	

13:24- 14:00	<p><b>Student Essay Competition Session 3</b> PhD session: 3 presentations: BM0184, BM0138, BM0232</p> <p><b>Chaired by:</b> Dr. Adnan KARAİBRAHİMOĞLU, Süleyman Demirel University, Turkiye Prof. Wen-Wei Chang, Chung-Shan Medical University, Taiwan</p>	Room D
<b>Parallel Sessions</b>		
13:00- 13:30	<p><b>Poster Oral Session 1: Earlier Medicine Using Machine Learning and Multimodal Techniques</b> 6 presentations: BM0077-A, BM0093-A, BM0111-A, BM0121, BM0172, BM0173-A</p> <p><b>Chaired by:</b> Prof. Yi-Ju Tseng, National Yang Ming Chiao Tung University, Taiwan</p>	Foyer
13:30- 14:00	<p><b>Poster Oral Session 2: Country-Specific Health Informatics and Epidemiology</b> 6 presentations: BM0068-A, BM0023-A, BM0035-A, BM0105-A, BM0109-A, BM0112-A</p> <p><b>Chaired by:</b> Dr. Hsien-Wei Ting, Taipei Hospital, Ministry of Health and Welfare, Taiwan</p>	
14:10- 14:35	<p><b>Poster Oral Session 3: From Bench to Bedside with GPT and Learning Health Systems</b> 5 presentations: BM0008, BM0041-A, BM0071-A, BM0113-A, BM0193-A</p> <p><b>Chaired by:</b> Prof. Hao-Yun Kao, Kaohsiung Medical University, Taiwan</p>	
14:35- 15:05	<p><b>Poster Oral Session 4: Human-Centered AI and mHealth Design</b> 6 Presentations: BM0057, BM0074-A, BM0089, BM0106, BM0118, BM0148</p> <p><b>Chaired by:</b> Dr. William.Yu Chung Wang, University of Waikato, New Zealand</p>	
15:15- 15:45	<p><b>Poster Oral Session 5: Smarter Care through Design and Spatial Analytics</b> 6 presentations: BM0031-A, BM0087, BM0097, BM0114-A, BM0125, BM0189-A</p> <p><b>Chaired by:</b> Prof. Dr. Hsi-Chieh Lee, National Quemoy University,</p>	

	Taiwan	
15:45- 16:10	<b>Poster Oral Session 6: Immersive AI for Next-Generation Patient Care</b> 5 presentations: BM0065-A, BM0076-A, BM0096, BM0116, BM0185 <b>Chaired by:</b> Dr. Shih-Ying Chien, Chang Gung University, Taiwan	Foyer
16:10- 16:40	<b>Poster Oral Session 7: Digital Health and Health Services Management</b> 6 presentations: BM0011-A, BM0012-A, BM0013-A, BM0016-A, BM0103-A, BM0017-A <b>Chaired by:</b> Dr. Dilruba İzgüden, Süleyman Demirel University, Türkiye	
16:50- 17:00	<b>Break Time</b>	
17:00- 17:50	<b>Closing Ceremony</b> Prof. Chi-Chang Chang, Chung-Shan Medical University, Taiwan Superintendent Prof. Ming-Che Tsai, Chung Shan Medical University Hospital, Taiwan Prof. Tetsuya Sakurai, University of Tsukuba, Japan Prof. Wen-Wei Chang, Chung-Shan Medical University, Taiwan	Atrium
17:50- 19:20	<b>Dinner</b>	
		Atrium

## May 17, 2026 | Sunday

Time	Arrangement	Venue
<b>Onsite</b>		
9:00-18:00	<b>One Day Tour</b>	
<b>Online Session</b>		
10:30-13:06	<b>Online Session: Frontiers in Patient-Centric Decision Intelligence</b> 13 presentations: BM0015, BM0083, BM0029, BM0054, BM0084, BM0164, BM0202, BM0214, BM0060, BM0178, BM0217, BM0176, BM0209 <b>Chaired by:</b> Dr. Chi-Hua Tung, Fu Jen Catholic University, Taiwan	<b>Meeting ID:</b> <b>865 4301 2912</b>

## Notes

- **Online participants need to join the test session on time. On May 16, 2025**, we will have the test session and online sign-in. Please join the test session before the formal session.
- Onsite participants need to do arrival registration. On May 16, 2025, we will have arrival registration and conference materials collection.
- Please pay special attention to the **time difference** and all schedules are arranged based on **GMT+9**. You can change the time on your watch and phone to **GMT+9** in advance in case you are confused with the time difference.
- Please try to find a **quiet environment**. In addition to the presentation and question section, the host will mute your microphone all the way.
- Please get familiar with the basic functions: **Rename, Chat, Raise Hands, and Share Screen**.
- Please join the session 10 minutes earlier and attend the whole conference. **Official electronic receipt and certificate** will be sent to you via e-mail after the conference.
- Only the organizer can record the video. Please **do not record** the video during the meeting.
- For participants who will attend the physical conference, the organizer doesn't provide accommodation, and we suggest you make an early reservation.
- For your property safe, please take good care of your valuables during the entire conference. The conference organizer does not assume any responsibility for your personal losses.
- For personal and property safety of delegates, please wear the conference Representative Card when enter and exit the venue. And wear it near the conference venue. Do not lend your card to someone unrelated to the conference. Do not bring unrelated people into the venue.
- ***There is Q&A part for all posters, so each presenter is required to stand in front of the poster for interaction with other participants. Best poster presentation would be chosen by the chair.***

**Venue: Science Hall, the 4<sup>th</sup> floor**

## Opening Remarks

09:30-10:00 (GMT+9) | 16<sup>th</sup>May



**Conference Founder**  
**Prof. Chi-Chang Chang**  
**Chung-Shan Medical University, Taiwan**



**Conference Chair**  
**Prof. Taka-Aki Sato**  
**University of Tsukuba, Japan**



**Honorary Chair**  
**Superintendent Prof. Ming-Che Tsai**  
**Chung Shan Medical University Hospital, Taiwan**



**Rotating Chair**  
**Prof. Tetsuya Sakurai**  
**University of Tsukuba, Japan**



**Rotating Chair**  
**Prof. Wen-Wei Chang**  
**Chung-Shan Medical University, Taiwan**

# Keynote Speaker

10:00-10:40 (GMT+9) | 16<sup>th</sup> May



## Hitoshi Nakagama

**President, Japan Agency for Medical Research and Development (AMED) / Honorary President, National Cancer Center (NCC)**

Hitoshi Nakagama has served as President of Japan Agency for Medical Research and Development (AMED) and Honorary President of National Cancer Center (NCC). He graduated from the University of Tokyo in 1982 and received Ph.D. in 1991. He then joined MIT, Center for Cancer Research, and worked with Prof. D.E. Housman on functional analysis of a tumor suppressor gene, WT1. After returning back to Japan in 1995, he took up a position at NCC Research Institute (NCCRI), and became Chief, Biochemistry Division (1997), Deputy Director (2007), and Director of NCCRI in 2011. He had worked at NCCRI on animal models of colon carcinogenesis induced by various environmental carcinogens and on DNA adductome to elucidate genetic/epigenetic alterations that play pivotal roles in driving cancer development. He also identified several tumor suppressive microRNAs regulating cell cycle arrest and/or apoptosis after exposure to environmental insults.

### Positions and Employment:

- 1984 Clinical Staff, The 3rd Department of Internal Medicine, University of Tokyo, Faculty of Medicine
- 1988 Research Associate, University of Tokyo, Faculty of Medicine
- 1991 Postdoctoral Fellow, Center for Cancer Research, MIT, U.S.A.
- 1995 Section Head, Carcinogenesis Division, National Cancer Center Research Institute (NCCRI)
- 1997 Chief, Biochemistry Division, NCCRI
- 2007 Deputy Director, NCCRI
- 2011 Director, NCCRI
- 2012 Executive Director, National Cancer Center (NCC)
- 2016-April 1, 2025-March President, NCC
- 2025- April 1, President, Japan Agency for Medical Research and Development (AMED) / Honorary President, National Cancer Center (NCC)

### Education:

- 1982 University of Tokyo, Faculty of Medicine, M.D.,
- 1992 University of Tokyo, Faculty of Medicine, D. M.Sc

## **Topic: Challenges of the Japan Agency for Medical Research and Development (AMED) in the Third Five-Year Medium- to Long-Term Plan**

*Abstract*—The Japan Agency for Medical Research and Development (AMED) serves as Japan’s national funding agency for medical research and development, operating in alignment with the national Healthcare Policy. AMED provides comprehensive and seamless support across the entire research continuum—from the basic science to the practical and societal implementation of discoveries originating from academia. In fiscal year 2025, AMED supported around 2,700 research projects and managed a research budget of around JPY 200 billion (USD 1.25 billion). These activities include research and development (R&D) programs, enhancement of research infrastructure, cultivation of human resources, strengthening of academia–industry–government collaboration and expansion of international research networks. Under the Third Medium- to Long-Term Plan (FY2025–FY2029), AMED promotes R&D through eight integrated projects: Innovative Drug Discovery and Development (PJ1), Medical Device and Healthcare (PJ2), Regenerative Medicine and Cell and Gene Therapies (PJ3), Infectious Disease Research (PJ4), Data Utilization and Life Course Research and Development (PJ5), Basic Research for Medical Innovation (PJ6), Translational and Clinical Research Acceleration (PJ7) and Medical Innovation Ecosystem (PJ8). AMED places strong emphasis on promoting industry–academia co-creation to accelerate the development of innovative modalities, advancing innovation ecosystems and strengthening global engagement. AMED also further expands and promotes data-driven R&D by artificial intelligence (AI) and further emerging technologies, including quantum technologies. As part of these programmatic efforts, support for the newly established organization, Genomic Medicine Japan (GeMJ), represents one of AMED’s symbolic initiatives to promote secure data utilization and sharing within a collaborative framework. In this presentation, I will introduce AMED’s latest initiatives in cancer research and development and discuss key challenges and perspectives for advancing cancer medicine.

# Poster Session 1

## Machine Learning for Clinical Data Analysis (I)

11:10-12:00, GMT+9 | May 16, 2026 Saturday

Venue: Science Hall, the 4<sup>th</sup> floor

Chaired by:



**Dr. Christoph Aigner**

**Research Group for Industrial Software,  
Technische Universität Wien, Austria**

### **BM0033-A**

Predicting future suicidal ideation and identifying persistent risk and protective factors among college students through multiple machine learning techniques: A two-year follow-up longitudinal study

**Li-Chung Lin**<sup>1</sup>, Chih-Han Leng<sup>2</sup> and Kaiping Grace Yao<sup>3</sup>

1: Chung Yuan University, Taiwan

2: National Tsing Hua University, Taiwan

3: National Taiwan University, Taiwan

### **BM0145-A**

Chat-Based Adaptive Symptom Collection for Imputing Missing Clinical Features in Lifestyle Disease Risk Inference

**Harriet Nyanchama Ocharo**

Hitachi Central Laboratory, Japan

### **BM0146-A**

Predicting the location of death for hospice shared care patients using the random forest algorithm

**Chieh-Kuan Hsu**

Cathay General Hospital, Taiwan

**BM0147-A**

Machine Learning-Based Mortality Prediction in Methicillin-Resistant *Staphylococcus aureus* Bloodstream Infection: A Comparative Multi-Model Study

**Chiau-Jing Jung**, Chi-Lan Chung and Yen-Hsiang Wang  
Taipei Medical University, Taiwan

**BM0149-A**

Development of a risk discrimination model for delirium in non-induced patients in the surgical intensive care unit based on machine learning methods

**Yu-Lu Huang**  
Cathay General Hospital, Taiwan

**BM0156**

Augmenting Cardiovascular Care with Artificial Intelligence: A Clinical Approach

**Vinod Pangracious**, Harihar Rengan, Georges Abdallah and Hyunmin Park  
School of Engineering, American University, UAE

**BM0128-A**

Design, Development, and Validation of a Smart Bedding Surface Oxygen Therapy System for Pressure Injury Prevention in Patients with Limited Mobility

**Taryudi Taryudi**<sup>1</sup>, Linlin Lindayani<sup>2</sup>, Yen-Chin Chen<sup>3</sup>, Taufiqurrachman Taufiqurrachman<sup>4</sup>, Astri Mutiar and Irma Darmawati<sup>2</sup>

1: Universitas Negeri Jakarta, Indonesia

2: Sekolah Tinggi Ilmu Keperawatan PPNI Jawa Barat, Bandung, Indonesia

3: National Sun Yat-sen University, Kaohsiung, Taiwan

4: The National Research and Innovation Agency of Indonesia (BRIN)

# Poster Session 2

## Machine Learning for Clinical Data Analysis (II)

11:10-12:00, GMT+9 | May 16, 2026 Saturday

Venue: Science Hall, the 4<sup>th</sup> floor

Chaired by:



**Dr. Xiucai Ye**

**University of Tsukuba, Japan**

### BM0004-A

Comparison of Outcomes Between Radial and Femoral Access Approaches in Patients Undergoing Cardiac Catheterization at Ramathibodi Chakri Naruebodindra Hospital

**Nutchanat Jongpean**, Natcha Khetlikhitworagoon and Nuttaya Pornmalairungruang  
Ramathibodi Chakri Naruebodindra Hospital, Faculty of Medicine Ramathibodi Hospital, Mahidol University, Thailand

### BM0048

Machine Learning Methods Comparison for Referral Triage to Spinal Cord Stimulation Procedure

**Yu-Li Huang** and Lan Jiang  
Mayo Clinic, USA

### BM0124

An Exploratory Analysis of Factors Shaping Cognitive Bias in AI-Assisted Medical Diagnosis

**Angela Rae Dui**, Ezekiel Bernardo  
De La Salle University, Philippines

### BM0126-A

Metal-organic frameworks-based sensing platforms for healthcare diagnosis

**Yu-Chen Tsai**, Shih-Hao Yang and Fang-Chi Chen  
National Chung Hsing University, Taiwan

**BM0150-A**

Exploring Disease-Medication Associations in Clinical Decision Support: An Interactive Visual Analytic System Using Nationwide Real-World Data

**Guan-Ling Lin**, Cheng-Ru Yang, **Yu-Chen Liu**, Chih-Wei Huang and Hsuan-Chia Yang  
Taipei Medical University, Taiwan

**BM0181-A**

Evaluation of the Applicability of Surface Electromyography Signals for Sarcopenia Grading

**Yu-Man Sun**, Ching-Fen Jiang and Po-Hsiang Wang  
I-Shou University, Taiwan

# Poster Session 3

## Immersive Medicine and Generative AI in Health

11:10-12:00, GMT+9 | May 16, 2026 Saturday

Venue: Science Hall, the 4<sup>th</sup> floor

Chaired by:



**Dr. Ting-Ying Chien**

**Yuan Ze University, Taiwan**

### **BM0059**

WebAR-Based Gamified Nutrition Platform for Dual-Purpose Health Intervention: System Design and Cross-Generational Validation

Han-chun Huang, Hsu-Min Chang, Yi-Fen Cheng and **Tzu-Yin Wang**  
Tajen University, Taiwan

### **BM0133**

Visual Analytics of Sugar Intake and Postprandial Interstitial Glucose Dynamics Using 3D Surface Plots

**Zilu Liang**<sup>1</sup>, Luna Lococo<sup>2</sup> and Thilini Karunaratna<sup>1</sup>

1: Kyoto University of Advanced Science, Japan

2: Ohio State University, USA

### **BM0140-A**

The Impact of Haptic and Mirror Feedback on Brain Activation in Older Adults: A fNIRS Study

**Hsiao-Feng Chieh**, Zheng-Lin Wu, Fong-Chin Su and Chien-Ju Lin

National Cheng Kung University, Taiwan

### **BM0197**

From Regression to Flow Matching: A Benchmark of Generative Models for MRI-to-CT Synthesis

**Thi Diem Ly Phan**<sup>1</sup>, Quang Nhat Vo<sup>2</sup> and Tuan Anh Tran<sup>3</sup>

1: National Taiwan Normal University, Taiwan

2: Huawei Technologies, Helsinki Research Center, Finland

3: Vietnam National University, Vietnam

# Poster Session 4

## Emerging Clinical Insights in Surgery and Patient Safety

11:10-12:00, GMT+9 | May 16, 2026 Saturday

Venue: Science Hall, the 4<sup>th</sup> floor

Chaired by:



**Advisor Lai-Shiun Lai**

**IT Department of Taichung Veterans General  
Hospital, Taiwan**

### BM0001-A

A Study to compare adverse clinical outcomes after total knee arthroplasty between drainage and without drainage at Ramathibodi Chakri Naruebodindra Hospital

**Patcharaporn Natsawang** and Anongnart Pragobsuk  
Faculty of Medicine Ramathibodi Hospital, Mahidol University, Thailand

### BM0003

Development of a Filtered Water Storage Tank System for Bronchoscope Cleaning to Prevent Microbial Contamination.

**Natcha Khetlikhitworagoon**, Nuchanat Jongpean and Nuttaya Pornmalairungruang  
Ramathibodi Chakri Naruebodindra Hospital, Faculty of Medicine Ramathibodi Hospital, Mahidol University, Thailand

### BM0005-A

The Importance of Patient Positioning in Spine Surgery: Effectiveness of Nursing Practice in Preventing Positioning-Related Complications

**Oraya Putpuang**, Nuchanad Choengchokchai and Nuttaya Pornmalairungruang

Ramathibodi Chakri Naruebodindra Hospital, Faculty of Medicine Ramathibodi Hospital, Mahidol University, Thailand

**BM0006-A**

Knowledge and Risk Perception of Osteonecrosis of the Jaw in Patients Receiving Antiresorptive Medications

**Nantawan Pinkeaw** and Nuttaya Pornmalairungruang  
Faculty of Medicine Ramathibodi Hospital, Mahidol University, Thailand

**BM0110-A**

The effect of donepezil on the neural-tumor microenvironment of non-small cell lung cancer

**Hsuan-Hung Chen**, Lu-Yi Yu and Chun-Liang Lo  
National Yang Ming Chiao Tung University, Taiwan

**BM0131-A**

MicroRNA-mediated regulation of FXRD3 and its implications for PDAC progression

**Kuen-Haur Lee** and Ke Xin Yee  
Taipei Medical University, Taiwan

**BM0021-A**

Designing an Equitable EHR-Integrated Medication Management Tool: A Participatory Qualitative Study

**Sreyon Murthi**<sup>1</sup>, Nataly Martini<sup>1</sup>, Shane Scahil<sup>1</sup> and Nazanin Falconer<sup>2</sup>  
1: University of Auckland, New Zealand  
2: University of Queensland, Australia

# Poster Session 5

## Innovations in Health Information Systems

11:10-12:00, GMT+9 | May 16, 2026 Saturday

Venue: Science Hall, the 4<sup>th</sup> floor

Chaired by:



**Prof. Chien-Lung Chan**

**Yuan Ze University, Taiwan**

### BM0027-A

The Feasibility and Effectiveness of Artificial Intelligence in Addressing Language Barriers in Healthcare Settings: A Systematic Review

**Quoc Dung Nguyen**, Dipankar Srirag, Joseph Zhu, Roberto Forero, Ben Harris-Roxas and Padmanesan Narasimhan

The University of New South Wales, Australia

### BM0052-A

Computerized Order Entry (CPOE) Implementation in a Government-owned Specialty Mental Health Hospital

**Dahildahil, Roy**<sup>1</sup>, Boncajes, Rodney<sup>1</sup>, Dang-awan Ruahden<sup>1,3</sup>

1: National Center for Mental Health Medical Informatics Unit, Philippines

2: University of the Philippines Manila (UPM) – Medical Informatics Unit (MIU), Philippines

3: University of the Philippines Manila (UPM) – College of Arts and Science (CAS), Philippines

### BM0136-A

To improve the accuracy of medical orders in medical X-ray imaging by implementing an AI-assisted recognition system

**Ming-Shu Chen**<sup>1</sup>, Kuo-Tung Ou<sup>2</sup>, Tsou-Chi Chen<sup>3</sup>, Shin Lu<sup>4</sup>, Pei-Yun Chen<sup>3</sup> and Chen-Yi Lai<sup>1</sup>

1: Asia Eastern University of Science and Technology, Taiwan

2: Far Eastern Memorial Hospital, Taiwan

3: National Taiwan Normal University, Taiwan

4: National Yang Ming Chiao Tung University, Taiwan

#### **BM0155-A**

Design and Validation of an LLM-Powered Intelligent Notification System for Occupational Injury Management

**Hao-Yun Kao**<sup>1</sup>, Wen-Ye Chang<sup>2</sup>, Chien-Ming Wu<sup>3</sup> and Chen-Cheng Yang<sup>1</sup>

1: Kaohsiung Medical University, Taiwan

2: National Taiwan University of Science and Technology, Taiwan

3: Yuan's General Hospital, Taiwan

#### **BM0177-A**

A Cross-Theoretical Study on Health Information Systems: Analyzing Success Factors of a Carbohydrate Monitoring System

**Chia Li Chen** and Shih-Jui Chang

1: Lunghwa University of Science and Technology, Taiwan

2: Tungnan University, Taiwan

#### **BM0182-A**

Improving AI-Driven Heart Failure Prediction: A Comparative Analysis of CNN and LSTM Architectures Using Holter-Derived SDNN Variability

**Adnan Karaibrahimoglu**, Irfan Polat Kuzdere and Nurgul Yasar

Suleyman Demirel University, Türkiye

#### **BM0201-A**

Construction-related emissions and human health in an urbanising world: a systematic assessment of climate risks and integrated governance

**Jin Shi**<sup>123</sup>, Lin Chen<sup>4</sup>, Lepeng Huang<sup>4</sup> and Zhuolin Xie<sup>4</sup>

1: Chongqing Health Center for Women and Children, China

2: Women and Children's Hospital of Chongqing Medical University, China

3: NHC Key Laboratory of Birth Defects and Reproductive Health, China

4: Chongqing University, China

# Poster Session 6

## Digital Innovations in Care Delivery

11:10-12:00, GMT+9 | May 16, 2026 Saturday

Venue: Science Hall, the 4<sup>th</sup> floor

Chaired by:



**Dr. I-Pin Chang**

**National Taiwan University of Science and  
Technology, Taiwan**

### BM0135

The Design and Implementation of a Web-Based AI Voice Storytelling Platform for Parent-Mediated Early Language Intervention

**Desy Nurrosalia Wisnuwardani**, Wahyu Bagus Handoko and Irwanto  
Universitas Airlangga, Indonesia

### BM0139

The Influence of Screen Time on Tantrum Occurrences Among Children Aged 1–6 Years in Indonesia

**Mery Susantri**<sup>1</sup>, Irwanto Irwanto<sup>2</sup>, Wahida Muntaza<sup>3</sup> and Firyal Ilona<sup>3</sup>

1: Universitas Nahdlatul Ulama Surabaya, Indonesia

2: Universitas Airlangga, Surabaya, Indonesia

3: Islam Surabaya A Yani, Hospital

### BM0142

Do Robots Improve Outcomes in Autism Spectrum Disorder? A Meta Analysis of Robot-Assisted Therapy in Children

**Rafi Razan** and Irwanto Irwanto  
Universitas Airlangga, Indonesia

### BM0154-A

Exploring the influences of digital job demands and resources on hospital nurses' attachment to workplace and turnover intention

**Yi-Wen Shih** and Hao-Yun Kao  
Kaohsiung Medical University, Taiwan

**BM0180-A**

Evaluation of Lower Limb Muscle Function Using Surface Electromyography and Its Relationship with Handgrip Strength in Sarcopenia

**Po-Hsiang Wang**, Ching-Fen Jiang and Yu-Man Sun  
I-Shou University, Taiwan

**BM0211**

Behavioral Determinants of AI-Driven Population Risk Prediction Tools for NCD Prevention: A Multi-Group PLS-SEM Study in Saudi Arabia

**Danah Bukhowah** and Dr. Mohammad Shbool  
Johns Hopkins Aramco Healthcare, The American University of Bahrain, Bahrain

**BM0230-A**

Data-driven Analysis of the Correlation between Glenohumeral Internal Rotation Deficit (GIRD) and Functional Performance in Youth Athletes

**Nai-Jen Chang** and Chun Tsao  
Kaohsiung Medical University, Taiwan

**BM0236-A**

Application of Passive Smartphone Digital Footprints in Depression Identification

**Tzyh-Chyang Chang**, Pei-Chen Chung and Shih-Lin Wu  
Chest Hospital, MOHW, Taiwan

# Oral Session 1

## Large Language Models and Foundation AI at the Bedside

13:00-14:12, GMT+9 | May 16, 2026 Saturday

Venue: Room A, the 4<sup>th</sup> floor

Chaired by:



**Advisor Lai-Shiun Lai**

**IT Department of Taichung Veterans General  
Hospital, Taiwan**

**13:00-13:12**

**BM0050**

Benchmarking Convolutional, Transformer, Hybrid, and Vision Language Models for Multi Disease Retinal Screening

**Durjoy Dey**, Aymane Ajbar and Yuhong Yan  
Concordia University, Canada

**13:12-13:24**

**BM0115**

“Engineering” Inner Peace With an LLM-Powered Meditation App: Crafting Personalized Meditations Based on User Interaction

Carina Arnberger<sup>1</sup>, **Christoph Aigner**<sup>1</sup>, Kerstin Limbeck<sup>2</sup>, Katharina Weindl<sup>3</sup>, Selina Breuer<sup>1</sup>, Lukas Röhring<sup>1</sup>, Thomas Grechenig<sup>4</sup> and René Baranyi<sup>1</sup>

1. Technical University of Vienna, Austria
2. Research Industrial Systems Engineering (RISE), Austria
3. Science & Research Institute for Industrial Software (INSO), Austria
4. Sanskrithi School of Engineering, Puttaparthi, India

**13:24-13:36**

**BM0161**

Applying Computer Vision and Large Language Models to Detect Hemorrhage of Ultrasound Image in Emergency Trauma Triage

Chia-Ching Chen<sup>1</sup>, Wen-Te Shih<sup>2</sup>, Ming-Chuan Chiu<sup>2</sup> and **Yi-Chia Kao**<sup>2</sup>

1: Chang-Bing Show Chwan Memorial Hospital, Changhua, Taiwan

2: National Tsing Hua University, Taiwan

**13:36-13:48**

**BM0162**

Predicting Cardiovascular Disease Diagnosis in Emergency Department Patients Using Pre-trained Language Models

**Yu-Shu Chou**, Shin-En Peng, Ming-Siang Huang, Ting-Yun Huang and Yung-Chun Chang

Taipei Medical University, Taiwan

**13:48-14:00**

**BM0240-A**

A Multi-Task Framework for Concurrent Protein-Peptide Interaction and Binding Residue Prediction Using Protein Language Models

**Shuwen Xiong** and Leyi Wei

Macao Polytechnic University, Macao, China

## Oral Session 2

# Risk Prediction and Digital Health Equity

13:00-14:12, GMT+9 | May 16, 2026 Saturday

Venue: Room B, the 4<sup>th</sup> floor

Chaired by:



**Prof. Tian-Fu Lee**

**Tzi Chi University, Taiwan**

**13:00-13:12**

**BM0009**

Does Pharmacologic Treatment of Anxiety and Depression Decrease the Chance of Unemployment in People with HIV? A Cautionary Tale of Data, Causal Assumptions, and Machine Learning

**Yiyang Liu**, Mo Wang, Zheng Feng, Jiang Bian and Mattia Prosperi  
University of Florida, USA

**13:12-13:24**

**BM0055**

Pseudo PPG-Signal Generation: Revealing a Potential Risk in Health-Promoting Bonus Programs using PPG Signals

Tatsuya Takehisa<sup>1</sup>, **Ryoichi Isawa**<sup>1</sup>, Hayato Ushimaru<sup>2</sup>, Daisuke Makita<sup>1</sup>, Dai Arisue<sup>3</sup>  
Satoshi Mimura<sup>4</sup>, Ryo Iijima<sup>5</sup> and Takahiro Kasama<sup>1</sup>

1: National Institute of Information and Communications Technology, Japan

2: Cyber Defense Institute, Inc., Japan

3: NEC Solution Innovators, Ltd., Japan

4: GMO Cybersecurity by Ierae, Inc., Japan

5: National Institute of Advanced Industrial Science and Technology, Japan

**13:24-13:36**

**BM0119-A**

Behavioural and Biological Risk Factors Associated with Non-Communicable Diseases among Malaysian Adults: Findings from a Health Informatics-Enabled PEACE Cohort Study

**Mohammad Iqbal Abu Bakar<sup>1</sup>, Roszita Ibrahim<sup>1</sup>, Zaleha Md Isa<sup>1</sup>, Rosnah Ismail<sup>1</sup>, Siti Fairuz Abu Bakar<sup>1</sup>, Siti Bazlina Mohd Rawi<sup>1</sup>, Aziemah Zulkifli<sup>1</sup>, Voon Phooi Tee<sup>2</sup>, Ng Yen Teng<sup>2</sup> Yap Sia Yen<sup>2</sup>, Maisarah Ab Fatah<sup>2</sup> and Kanga Rani Selvaduray<sup>2</sup>**

1. Universiti Kebangsaan Malaysia, Malaysia

2. Malaysian Palm Oil Board (MPOB), Malaysia

**13:36-13:48**

**BM0204-A**

Predictive Analytics of Hospital Readmissions in Older Heart Failure Patients Using National Health Insurance Big Data

**Yu-Jie Lin**, Hsin-I Kao and Ying-Chun Li

National Sun Yat-sen University, Taiwan

**13:48-14:00**

**BM0233**

Ensemble Learning-Driven Cyber Attack Detection in IoHT under a Zero Trust Architecture: A Primary Study

Tian-Fu Lee<sup>1</sup>, **I-Pin Chang<sup>2</sup>** and Tsung-Hung Lin<sup>3</sup>

1: Tzu Chi University, Taiwan

2: National Taiwan University of Science and Technology, Taiwan

3: National Chin-Yi University of Technology, Taiwan

**14:00-14:12**

**BM0234**

Integration of Electronic Medical Record Database Security and Artificial Intelligence on Gastric Cancer Recognition

**Tin-Fu Lee<sup>1</sup>**, Jyun-Guo Wang<sup>1</sup>, Jui-Sheng Hung<sup>2</sup> and I-Pin Chang<sup>3</sup>

1: Tzu Chi University, Taiwan

2: Hualien Tzu Chi Hospital, Taiwan

3: National Taiwan University of Science and Technology, Taiwan

# Oral Session 3

## Intelligent Imaging and Immersive Technologies

13:00-14:12, GMT+9 | May 16, 2026 Saturday

Venue: Room C, the 4<sup>th</sup> floor

Chaired by:



**Dr. Ting-Ying Chien**

**Yuan Ze University, Taiwan**

**13:00-13:12**

**BM0078**

Building Virtual Reality that patients will use: Patient-Derived Guidelines for VR Design and Content in Cancer Care

**Safa Elkefi**<sup>1</sup>, Steve Feiner<sup>2</sup> and Alicia Matthews<sup>2</sup>

1. Binghamton University, USA

2. Columbia University, USA

**13:12-13:24**

**BM0080**

Context-Aware Client Selection in Federated Learning for Heterogeneous Medical Imaging

Soroush Ziaeinejad and **Saeed Samet**

University of Windsor, School of Computer Science, Canada

**13:24-13:36**

**BM0165**

Real-Time Anatomical Guidance for Telerobotic Ultrasound Examinations Using Automatic Multi-Organ Segmentation

**Abdelkrim Belhaoua**, Gwenael Charron, Hind Errame, Eric Lefebvre and Nicolas Lefebvre

AdEchoTech, France

13:36-13:48

BM0175

Deterministic Latent Flow Matching for Cardiac CT Contrast Enhancement

Cheng-Chia Huang<sup>1</sup>, **Ting-Chun Hung**<sup>1</sup>, Jia-Da Li<sup>2</sup>, Tzung-Dau Wang<sup>3</sup> and Chu-Song Chen<sup>1</sup>

1: Department of Computer Science and Information Engineering, National Taiwan University, Taiwan

2: NTU Joint Research Center for AI Technology and All Vista Healthcare, National Taiwan University, Taipei, Taiwan

3: Division of Cardiology, Department of Internal Medicine, National Taiwan University Hospital and National Taiwan University College of Medicine, Taiwan

# Oral Session 4

## Multimodal AI for Clinical Risk Stratification

14:12-15:24, GMT+9 | May 16, 2026 Saturday

Venue: Room A, the 4<sup>th</sup> floor

Chaired by:



**Prof. Yen-Wei Chu**

**National Chung Hsing University, Taiwan**

**14:12-14:24**

**BM0102-A**

Global Bibliometric Analysis of Opportunistic Intestinal Protozoa among People Living with HIV

**Faris Rega Riswana**, Loeki Enggar Fitri and Nuning Winaris  
Universitas Brawijaya, Indonesia

**14:24-14:36**

**BM0122**

Multimodal AI-Based Early Risk Stratification Model for Osteonecrosis of the Jaw in Patients with Head and Neck Cancer

**Yi Yin Chen**<sup>1</sup>, Ming-Chuan Chiu<sup>1</sup>, Chun-Chia Chen<sup>2</sup> and Heng-Yu Lin<sup>2</sup>

1: National Tsing Hua University, Taiwan

2: Chi Mei Medical Center, Tainan

**14:36-14:48**

**BM0143-A**

Time-Resolved Oximetry-Driven Obstructive Sleep Apnea Event Mapping: A Multimodal Framework with Uncertainty Quantification

**Shinn-Ying Ho**<sup>1</sup>, Wei-An Ke<sup>1</sup> and Yen-Tze Liu<sup>2</sup>

1: National Yang Ming Chiao Tung University, Taiwan

2: Changhua Christian Hospital, Taiwan

**14:48-15:00**

**BM0203-A**

Health Informatics-Based Osteoporosis Risk Prediction and Preventive Education

for Community Screening in Aging Societies

**Hsin-I Kao**, Yu-Jie Lin and Ying-Chun Li

National Sun Yat-sen University, Taiwan

15:00-15:12

**BM0226-A**

Controllable Diffusion Image Editing for Targeted Minority-Class Augmentation

**Ping-Yen Hsieh** and Ting Ying Chien

Yuan Ze University, Taiwan

15:12-15:24

**BM0239-A**

Improving drug-target affinity predictions with explainable multi-modal deep representation learning

**Yuhang Liu** and Leyi Wei

Macao Polytechnic University, Macao, China

# Oral Session 5

## AI-Enhanced Rehabilitation and Nursing Care Services

14:12-15:24, GMT+9 | May 16, 2026 Saturday

Venue: Room B, the 4<sup>th</sup> floor

Chaired by:



**Dr. Hsien-Wei Ting**

**Taipei Hospital, Ministry of Health and Welfare,  
Taiwan**

**14:12-14:24**

**BM0037-A**

Effect of Health Education by Pharmacists on First-Time Head and Neck Cancer Outpatients

Hui Fang<sup>1</sup> and **Ho Keat Leng**<sup>2</sup>

1: National Taiwan University, BioMedical Park Hospital, Taiwan

2: National Tsing Hua University, Taiwan

**14:24-14:36**

**BM0039**

The effects of technology-assisted intervention on the Otago Exercise Program health outcomes among older adults

Chao-Fen Hsu and **Shu-Fen Tseng**

Yuan Ze University, Taiwan

**14:36-14:48**

**BM0227-A**

Visual Finger Exercise Recognition System Integrated with Caregiving Robots for Delaying Cognitive Decline in the Elderly

**Cheng-Yu Tsai, Yi Lan** and Ting Ying Chien

Yuan Ze University, Taiwan

**14:48-15:00**

**BM0235-A**

A Gamified Digital System for Assessing Attention and Hand Function in Stroke Rehabilitation

**Shih-Ying Chien**<sup>1,2,3</sup>

1: Chang Gung University, Taiwan

2: Chang Gung Memorial Hospital, Taiwa

3: National Yang Ming Chiao Tung University, Taiwan

**15:00-15:12**

**BM0241**

RAG-Enhanced Nursing Diagnosis Decision Support in Taiwan Hospital Settings

**Shao-Kuo Tai**, Sheng-Ming Kuo and Rung-Ching Chen

Chaoyang University of Technology, Taiwan

# Oral Session 6

## Data-Driven Health System Governance

14:12-15:24, GMT+9 | May 16, 2026 Saturday

Venue: Room C, the 4<sup>th</sup> floor

Chaired by:



**Prof. Wen-Wei Chang**

**Chung-Shan Medical University, Taiwan**

**14:12-14:24**

**BM0024-A**

Analysis of the Current Ambulance Fee System and Improvement Strategies: A Case Study of Taoyuan City

**Ren-Hao Zhan**<sup>1,3</sup>, Shang-Chiao Yang<sup>2,3</sup>, Yen-Chang Huang<sup>3</sup>, Szu-Chieh Huang<sup>3</sup>, Hui-Tang Chang<sup>1</sup>

1: Kainan University, Taiwan.

2: National Taiwan Normal University, Taipei, Taiwan

3: Taoyuan Fire Department, Taoyuan City Government, Taiwan

**14:24-14:36**

**BM0049-A**

Expanding Access to Pediatric Clinical Services in Ukraine's Conflict Zones Through Telehealth

**Stella Nam**<sup>1,2</sup>, Mary Showstark<sup>1</sup>, Yuliia Kardash<sup>1</sup>, Oleksii Vlasov<sup>1</sup>, Olha Maltseva<sup>1</sup>, Robert Arnot<sup>1</sup>, Karen Redlener<sup>3</sup>, Irwin Redlener<sup>3</sup> and Jarone Lee<sup>1,2</sup>

1: Health Tech Without Borders Inc., Boston, MA

2: Massachusetts General Hospital, Boston, MA

3: Ukraine Children's Action Project, New York City, NY

**14:36-14:48**

**BM0081**

Network Analysis of EHR Access Logs to Characterize Information Sharing Patterns by Complex Healthcare Delivery Teams

**Shin-Ping Tu**<sup>1</sup>, Yong Xia<sup>2</sup>, Brittany Garcia<sup>1</sup>, Hsiao-Ying Lu<sup>1</sup>, Daniel Sewell<sup>3</sup>, Kwan-Liu Ma<sup>1</sup>, Michae Hogarth<sup>2</sup> and Aaron Boussina<sup>2</sup>

1. University of California, Davis, USA

2. University of California, San Diego, USA

3. University of Iowa, USA

**14:48-15:00**

**BM0108-A**

Bridging the Implementation-Reality Gap: A Clinician-Led No-Code Platform to Optimize Anesthesia Handovers and Workforce Management

**Ratikorn Boonchai**

Prince of Songkhla University, Thailand

**15:00-15:12**

**BM0168**

Interpretable Features for Movement Correctness Assessment in Home Rehabilitation

**Yu Hou** and Tsutomu Fujinami

Japan Advanced Institute of Science and Technology (JAIST), Japan

**15:12-15:24**

**BM0187-A**

Quantifying the Digital Supervision Gap: A Data-Driven Framework for Equitable Digital Wellness in Diverse Family Contexts

**Shangchiao Yang** and Yi-Jin Hu

National Taiwan Normal University, Taiwan

## Oral Session 7

# Machine Learning for Clinical Data Analysis

15:24-16:24, GMT+9 | May 16, 2026 Saturday

Venue: Room A, the 4<sup>th</sup> floor

Chaired by:



**Prof. Yi-Ju Tseng**

**National Yang Ming Chiao Tung University, Taiwan**

15:24-15:36

**BM0047**

A joint learning framework for tumor segmentation and subtype prediction in non-small cell lung cancer from CT imaging

Joung Min Choi, Chanhyeon Park and **Heejoon Chae**

1: Virginia Tech, USA

2: Sookmyung Women's University, South Korea

15:36-15:48

**BM0053**

Description-Based Machine Learning Standardization of Japanese Medication Codes for International Clinical Research

**Alba Segovia Hilara**<sup>1</sup>, David Rubio<sup>1,2</sup>, Keisaku Makiuchi<sup>3</sup>, Shogo Wakabayashi<sup>3</sup> and Matvey Palchuk<sup>1,4</sup>

1: TriNetX, LLC, Cambridge, Massachusetts, USA.

2: Biomedical Informatics Group, Universidad Politécnica de Madrid, Spain

3: TriNetX Japan K.K.

4: Harvard Medical School, Boston, Massachusetts, USA

15:48-16:00

**BM0088**

Application of Machine Learning Algorithms to Classify Smoking Cessation Behavior Among Thai Population

**Navapop Chunanusorn** and Sirinya Teeraananchai

Kasetsart University, Thailand

**16:00-16:12****BM0123**

A Deep Learning Approach for Anesthesia Depth Prediction and Drug Recommendation Based on the Bispectral Index

**Yu-Ting Huang**<sup>1</sup>, Ming-Chuan Chiu<sup>1</sup>, Tsung-Yang Lee<sup>2</sup>, Tsan-Wen Huang<sup>2</sup> and Cheng-Hsu Lu<sup>2</sup>

1: National Tsing Hua University, Taiwan

2: Jen-Ai Hospital, Taichung, Taiwan

**16:12-16:24****BM0206-A**

Development of deep learning models for automatic detection of Pancreatic Cancer with Abdominal Ultrasound Images

**Min-Kai Liao** and Hung-Wen Chiu

Taipei Medical University, Taiwan

## Oral Session 8

# Computational Methods for Precision Medicine

15:24-16:24, GMT+9 | May 16, 2026 Saturday

Venue: Room B, the 4<sup>th</sup> floor

Chaired by:



**Dr. Xiucai Ye**

**University of Tsukuba, Japan**

15:24-15:36

**BM0245-A**

Integrating Structural Cues and Multi-Level Representations for Generalizable Drug-Target Interaction Prediction

**Hui Han**, Xiucai Ye and Tetsuya Sakurai  
University of Tsukuba, Japan

15:36-15:48

**BM0246-A**

Learning Adaptive Sample Graphs for Multi-Omics Cancer Subtype Classification

**Mengke Guo**, Xiucai Ye and Tetsuya Sakurai  
University of Tsukuba, Japan

15:48-16:00

**BM0247-A**

Task-Aware Clustering Framework for Identifying Subtypes of Cognitive Decline

**Weike Liu**, Xiucai Ye and Tetsuya Sakurai  
University of Tsukuba, Japan

16:00-16:12

**BM0248-A**

Deep Learning-Based Multi-Omics Clustering for Clinically Relevant Cancer

Subtyping

**Tianyi Shi**, Xiucan Ye and Tetsuya Sakurai

University of Tsukuba, Japan

**16:12-16:24**

**BM0249-A**

Task-Aware Clustering of Gut Microbiome Data for Inflammatory Bowel Disease Stratification

**Teruhito Matsunaga**, Xiucan Ye and Tetsuya Sakurai

University of Tsukuba, Japan

## Oral Session 9

# AI-Enabled Early Detection and Diagnosis of Diseases

15:24-16:24, GMT+9 | May 16, 2026 Saturday

Venue: Room C, the 4<sup>th</sup> floor

Chaired by:



**Prof. Wen-Wei Chang**

**Chung-Shan Medical University, Taiwan**

15:24-15:36

**BM0045**

AI-Driven Bronchiectasis Diagnosis: A Cloud-Edge System with High-Precision Detection and Segmentation

Wei-Che Yu<sup>1</sup>, Hung-Yu Huang<sup>2</sup>, Chun-Chieh Hsiao<sup>3</sup>, **Ren-Guey Lee<sup>1</sup>** and Chwan-Lu Tseng<sup>1</sup>

1: National Taipei University of Technology, Taiwan

2: Thoracic Medicine, Chang Gung Memorial Hospital, Taiwan

3: Lunghwa University of Science and Technology, Taiwan

15:36-15:48

**BM0075**

A Temporal Entity-Relationship Model for Medical Information Processing

**Frank S.C. Tseng<sup>1</sup>** and Annie Y.H. Chou<sup>2</sup>

1: National Kaohsiung University of Science and Technology

2: ROC Military Academy

15:48-16:00

**BM0079**

Edge of Infection: Creating a Knowledge Graph Architecture for Vector-Borne Disease Tracking

Juniper Huang<sup>1</sup>, Ashrita Kollipara<sup>1</sup>, Christian Mejia<sup>1</sup>, Elif Kulahlioglu<sup>1</sup>, **Ting Yu**

**Hung<sup>1</sup>**, Grace Hui<sup>1</sup>, Siddiq Mohaideen<sup>1</sup>, Jacob Edwards<sup>1</sup>, Ghea Chaw<sup>1</sup>, Bailey Cross<sup>1</sup>, Thilanka Munasinghe<sup>1</sup> and Assaf Anyamba<sup>2</sup>

1. Rensselaer Polytechnic Institute, USA

2. University of Maryland, Baltimore County & NASA Goddard Space Flight Center, USA

**16:00-16:12**

**BM0104**

Identifying Key Determinants of Chronic Obstructive Pulmonary Disease (COPD) Development in Thailand

**Puntarika Boonmasueb<sup>1</sup>**, Sirinya Teeraananchai<sup>1</sup>, Picha Suwannahitatorn<sup>1,3</sup>, Suthat Chottanapund<sup>2</sup> and Juthaphorn Sinsomboonthong<sup>1</sup>

1. Kasetsart University, Thailand

2. Ministry of Public Health, Nontaburi, Thailand

3. Phramongkutklao College of Medicine, Thailand

**16:12-16:24**

**BM0152-A**

Geographic Disparities in Dental Utilizations among Patients with Diabetes in Taiwan

**Yi-Cai Liu** and Hsueh-Fen Chen

Kaohsiung Medical University, Kaohsiung, Taiwan

# Student Essay Competition- Undergraduate Session

**12:00 - 12:48, GMT+9 | May 16, 2026 | Saturday**

**Venue: Room D, the 4<sup>th</sup> floor**

**Chaired by:**



**Prof. Hao-Yun Kao, Kaohsiung Medical University, Taiwan**



**Dr. William.Yu Chung Wang, University of Waikato, New Zealand**

Undergraduate Session	
<b>12:00-12:12</b>	<p><b>BM0186</b></p> <p>Enhancing Emergency Department Triage Workflow Efficiency via Speech Recognition and RAG: A System Design Based on the Taiwan Triage and Acuity Scale</p> <p><b>Yu-Chien Sun<sup>1</sup></b>, Ting-Cheng Chu<sup>1</sup>, Yu-Jie Chou<sup>1</sup>, Kai-Ling Chu<sup>1</sup>, Audrey Pei-Chen Lin<sup>1</sup>, Tzu-Meng Yang<sup>2</sup>, Wei-Hong Shen<sup>2</sup>, Sin-Ping Li<sup>2</sup> and Chi-Jie Lu<sup>1</sup></p> <p>1: Fu Jen Catholic University, Taiwan 2: Fu Jen Catholic University Hospital, Taiwan</p>
<b>12:12-12:24</b>	<p><b>BM0224</b></p> <p>Self-Distillative Exemplar Replay for Incremental Drug Identification</p> <p><b>Yi-Cheng Lin, Kuan-Ti Chiang</b> and Ting Ying Chien Yuan Ze University, Taiwan</p>
<b>12:24-12:36</b>	<p><b>BM0225</b></p> <p>A Multimodal Auxiliary Diagnostic System for Brain CT: Integrating Automated ICD Coding and Quantifiable Disease Risk Assessment</p> <p><b>Po-Hao Chen</b>, Chieh-En Wu and Ting Ying Chien Yuan Ze University, Taiwan</p>
<b>12:36-12:48</b>	<p><b>BM0244</b></p> <p>Exploring the Potential of Digital Twins in Health: A Narrative Review in IEEE Xplore</p> <p><b>Heng-Jui Liu</b>, Chi-Chang Chang and Wei-Chun Lin Chung Shan Medical University, Taiwan</p>

# Student Essay Competition-Master Session

**12:48 - 13:24, GMT+9 | May 16, 2026 | Saturday**

**Venue: Room D, the 4<sup>th</sup> floor**

**Chaired by:**



**Dr. Xiucan Ye, University of Tsukuba, Japan**



**Prof. Yen-Wei Chu, National Chung Hsing University, Taiwan**

**Master session**
**12:48-13:00** | **BM0058**

A FHIR-Based Mapping Model for the Indonesian National Cancer Registry (SRIKANDI)

**Sania Fitria**<sup>1</sup>, Annisa Ristya Rahmanti<sup>1</sup> and Anisatul' Afifah<sup>2</sup>

1: Universitas Gadjah Mada, Indonesia

2: Digital Transformation Office (DTO), Ministry of Health, Indonesia

**13:00-13:12** | **BM0242**

Analyzing the Impact of PM2.5 of Recurrent Non-Small Cell Lung Cancer Using Machine Learning Techniques

**Yun-Shan Hsieh**, Chi-Chang Chang and Hsiao-Hui Hsu

Chung Shan Medical University, Taiwan

**13:12-13:24** | **BM0243**

Applications Of Digital Twin In Clinical Cancer Research : A Narrative Review

**Wei-Chun Lin**, Chi-Chang Chang and Heng-Jui Liu

Chung Shan Medical University, Taiwan

# Student Essay Competition-PhD Session

**13:24 - 14:00, GMT+9 | May 16, 2026 | Saturday**

**Venue: Room D, the 4<sup>th</sup> floor**

**Chaired by:**



**Dr. Adnan KARAİBRAHİMOĞLU, Süleyman Demirel University, Türkiye**



**Prof. Wen-Wei Chang, Chung-Shan Medical University, Taiwan**

**PhD Session**
**13:24 - 13:36**
**BM0184**

Improving Emergency Health Response with an NFC-Enabled Activation Protocol: Effects on Time to First Blood Transfusion in Traumatic Hemorrhage

**Shangchiao Yang**, Yi-Jin Hu and Yung-Hsiang Chang  
National Taiwan Normal University, Taiwan

**13:36-13:48**
**BM0138**

StenoVQA: A Vision-Language Framework for Intracranial Stenosis Detection in TOF-MRA

**Jasmin T.Ngoc Nguyen**, Ai-Hsien Adams Li, Yen-Chun Lai, Chien-Wei Huang  
Ting-Ying Chien and Chien-lung Chan  
Yuan Ze University, Taiwan

**13:48-14:00**
**BM0232**

MyeloCrop-AI: An Integrated AI and Image-Cropping Framework for Automated MRI-Based Syringomyelia Detection

**Sih-han Chen**<sup>1</sup>, Chih-lung Lin<sup>2</sup> and Yen-wei Chu<sup>1</sup>  
1: National Chung Hsing University, Taiwan  
2: Asia University Hospital, Taichung, Taiwan

## Poster Oral Session 1

# Earlier Medicine Using Machine Learning and Multimodal Techniques

13:00-13:30, GMT+9 | May 16, 2026 Saturday

Venue: Foyer, the 4<sup>th</sup> floor

Chaired by:



**Prof. Yi-Ju Tseng**

**National Yang Ming Chiao Tung University, Taiwan**

### **BM0077-A**

Addressing the Urgency of Undiagnosed Ventricular Septal Defects: A Deep Learning Approach for Early Detection in Resource-Limited Settings

**Taufiq Hidayat**<sup>1</sup>, Irwanto Irwanto<sup>1</sup>, Shabrina Imanina and Nur Iriawan<sup>2</sup>

1. Airlangga University, Indonesia

2. Institut Teknologi Sepuluh Nopember, Indonesia

### **BM0093-A**

A Fusion-Based Deep Learning Model for Postoperative Prognosis Prediction in Traumatic Brain Injury Using Multi-Scan Brain CT Images

**Hsueh-Yi Lu** and Chia-Ying Liu

National Yunlin University of Science and Technology, Yunlin, Taiwan

### **BM0111-A**

The Impact of COVID-19 on U.S. Hospital Cost Structures: Evidence from Machine Learning

**Seungiae Shin**

Mississippi State University, USA

### **BM0121**

A Clinical Decision Support System for Hepatocellular Carcinoma Based on Explainable Multimodal Techniques

**Yi-Chu Cheng**<sup>1</sup>, Ming-Chuan Chiu<sup>1</sup> and Po-Heng Chuang<sup>2</sup>

1: No. 101, Section 2, Kuang-Fu Road, Hsinchu, Taiwan

2: 483, Dong Rong Rd, Dali, Taichung, Taiwan

**BM0172**

Temporal Machine Learning for One-Year Prostate Cancer Risk Prediction in the PSA Gray Zone

**Devesh Singh Chauhan**, Sheng-Lun Hsu, Hsuan-Chia Yang and Chih-Wei Huang

Taipei Medical University, Taiwan

**BM0173-A**

Multi-Modal Radiomics for PET/CT Tumor Characterization

Jona Rose Llabres, Johannes Gubat and **Ian Jasper Agulo**

1: University of the Philippines Baguio, Philippines

2: Department of Biomedical and Clinical Sciences, Linköping University, Sweden

# Poster Oral Session 2

## Country-Specific Health Informatics and Epidemiology

13:30-14:00, GMT+9 | May 16, 2026 Saturday

Venue: Foyer, the 4<sup>th</sup> floor

Chaired by:



**Dr. Hsien-Wei Ting**

**Taipei Hospital, Ministry of Health and Welfare, Taiwan**

### **BM0068-A**

Using Public Health Informatics and National Claims Data to Identify Inappropriate Cancer Screening in Taiwan

**Ying-Chun Li**, Hsin-Ching Yang and Pei-Jane Wu

National Sun Yat-sen University, Taiwan

### **BM0023-A**

Developing Emergency Neurosurgical Services: Trends and Outcomes in Intracranial Hemorrhage Patients at a Secondary Care Hospital

**Nuchanad Choengchokchai**, Oraya Putpuang and Nuttaya Pornmalairungruang

Ramathibodi Chakri Naruebodindra Hospital, Faculty of Medicine Ramathibodi Hospital, Mahidol University, Thailand

### **BM0035-A**

Predictive Scoring Model and Indicators of Intestinal Parasitic Infections in School-age Students: A Cross-sectional Study in Jalalabad City, Afghanistan

Ahmad Gul Azami<sup>1</sup>, Sant Maungnoicharoen<sup>2</sup>, Polrat Wilairatana<sup>2</sup> and **Noppadon Tangpukdee<sup>2</sup>**

1: Nangarhar University, Afghanistan

2: Mahidol University, Thailand

**BM0105-A**

Integrating Caregiver Cost Data Into Health Informatics Systems: Direct and Indirect Costs Of Type 2 Diabetes Mellitus Care In Public Primary Healthcare in Malaysia

**Siti Bazlina Mohd Rawi**<sup>1</sup>, **Roszita Ibrahim**<sup>1</sup>, Norfazilah Ahmad<sup>1</sup> and Cassidy Devarajoo<sup>2</sup>

1. Universiti Kebangsaan Malaysia, Malaysia
2. Raub District Health Office, Pahang, Malaysia

**BM0109-A**

Integrating Health Informatics into a Longitudinal Cohort Study of Palm Oil Consumption and Cardiovascular Risk Among Malaysian Adults (PEACE Study)

**Siti Fairuz Abu Bakar**<sup>1</sup>, Zaleha Md Isa<sup>1</sup>, Roszita Ibrahim<sup>1</sup>, Siti Bazlina Mohd Rawi<sup>1</sup>, Mohammad Iqbal Abu Bakar<sup>1</sup>, Rosnah Ismail<sup>1</sup>, Voon Phooi Tee<sup>2</sup>, Ng Yen Teng<sup>2</sup>, Aziemah Zulkifli<sup>1</sup>, Yap Sia Yen<sup>2</sup>, Maisarah Ab Fatah<sup>2</sup> and Kanga Rani Selvaduray<sup>2</sup>

1. Universiti Kebangsaan Malaysia, Malaysia
2. Malaysian Palm Oil Board (MPOB), Malaysia

**BM0112-A**

Time Trends in the Comorbid Psychiatric Disorders Among Children and Adolescents with Intellectual Disability in South Korea: A Nationwide Study from 2012-2021

**Hyun Jung Lee** and Na ri Kang

Jeju National University Hospital, South Korea

# Poster Oral Session 3

## From Bench to Bedside with GPT and Learning Health Systems

14:10-14:35, GMT+9 | May 16, 2026 Saturday

Venue: Foyer, the 4<sup>th</sup> floor

Chaired by:



**Prof. Hao-Yun Kao**

**Kaohsiung Medical University, Taiwan**

### **BM0008**

Open-Source vs Proprietary GPT Models for Cancer Variant Interpretation: Benchmarking GPT-Oss 20B/120B Against GPT-4o on FoundationOne CDx

**Kuan-Hsun Lin**, Tzu-Hang Kao, Lei-Chi Wang, Chen-Tsung Kuo, Paul Chih-Hsueh Chen, Yi-Chen Yeh and Yuan-Chia Chu

Taipei Veterans General Hospital, Taiwan

### **BM0041-A**

AI-Assisted Ultra-Processed Food Identification: Evaluating Large Language Models for NOVA Classification of Taiwanese Foods

**Hsiao-Wen Chuang** and Yi-Chen Huang

China Medical University, Taiwan

### **BM0071-A**

AI-Powered Analysis of Nursing Handoff Quality Across Structured Communication Frameworks

**Ju Hee Kim**, Jung Won Choi, Joon Ho Park, Hee Woong Jeong, Myung Hoon Lee, Myung Gwan Kim, Jin Hyung Lee, Kang Hyun Kim, Seung Hyoung Ko and Hyun Wook Han

CHA University, South Korea

**BM0113-A**

Developing an Automated Her2-FISH Image Analysis System for Supporting Clinical Diagnosis

**Wei-Cheng Dai**, Cheng-Wei Liu and Tzu-Hsien Yang

National Cheng Kung University, Taiwan

**BM0193-A**

Deploying AI-Enabled Learning Health Systems Under Real-World Constraints: Operational Lessons from Epilepsy, Dementia, and Bipolar Disorder

**Dong-Gil Ko**

University of Cincinnati, USA

# Poster Oral Session 4

## Human-Centered AI and mHealth Design

14:35-15:05, GMT+9 | May 16, 2026 Saturday

Venue: Foyer, the 4<sup>th</sup> floor

Chaired by:



**Dr. William.Yu Chung Wang**

**University of Waikato, New Zealand**

### **BM0057**

Reducing Caregiver Workload through Mobile Health: Design and Implementation of a User-Centered mHealth Platform for Elderly Care

**Han-chun Huang**, Hsu-Min Chang  
Tajen University, Taiwan

### **BM0074-A**

A Conceptual Framework for Integrating Philosophical and Relational Competencies into Medical AI Education

**Yong Jin Kwon**  
Seoul National University, South Korea

### **BM0089**

Enhancing Healthcare for the Elderly through Culture and Religion-Inspired Design

Manishk Gawande<sup>1</sup>, Yegang Du<sup>2</sup> and **Gabriele Trovato**<sup>2</sup>  
1. Shibaura Institute of Technology, Tokyo, Japan  
2. Tohoku University, Sendai, Japan

### **BM0106**

Exploring the Determinants of Continuous Usage Intention with Mobile Health (mHealth) for Diabetes Self-Management

**Sophia Michaela D. Espiritu** and Ma. Janice J. Gumasing

De La Salle University, Philippines

**BM0118**

Closing Gaps: Supporting Contemporary EHR Design in Understanding Informal Care

Daniela Pichler<sup>1</sup>, **Christoph Aigner**<sup>2</sup>, Thomas Grechenig<sup>3</sup> and René, Baranyi<sup>1</sup>

1. RISE – Research Industrial Systems Engineering, Austria

2. Technical University of Vienna, Austria

3. Sanskrithi School of Engineering, Puttaparthi, India

**BM0148**

Artificial Moral Advisors in Sexual Health: The Effects of AI Moral Agency on Trust and Adoption

**Tze Wei Liew**, Su-Mae Tan, Yi Yong Lee, Chin Lay Gan, Siok Wah Tay and Yee Yen Yuen

Multimedia University, Malaysia

# Poster Oral Session 5

## Smarter Care through Design and Spatial Analytics

15:15-15:45, GMT+9 | May 16, 2026 Saturday

Venue: Foyer, the 4<sup>th</sup> floor

Chaired by:



**Prof. Hsi-Chieh Lee**

**National Quemoy University, Taiwan**

### **BM0031-A**

Radiomics-Based Detection of Coronary Artery Calcium on Scout Images for Opportunistic CAD Screening

Yu-Tai Shih<sup>1,2</sup>, Jia-Chi Hsu<sup>3</sup> and **Jay Wu**<sup>3</sup>

1: Hualien Tzu Chi Hospital, Taiwan

2: Tzu Chi University, Taiwan

3: National Yang Ming Chiao Tung University, Taiwan

### **BM0087**

Modeling and Interpreting Teamwork Dynamics in Cancer Care Outcome Prediction

Yuhua Huang, Hsiao-Ying Lu and **Kwan-Liu Ma**

University of California, Davis, USA

### **BM0097**

Architecting a Co-Designed Clinical Decision Support System for Diabetes Management

Architecting a Co-Designed Clinical Decision Support System for Diabetes Management

**William Yu Chung Wang**<sup>1</sup>, Philip Hong Wei Jiang<sup>1</sup>, Ibrahim Shafiu<sup>2</sup>, Ryan Paul<sup>2</sup>, Rawiri Keenan<sup>1</sup>, Anuradha Madurapperumage<sup>3</sup> and Chen Liu<sup>1</sup>

1. University of Waikato, New Zealand

2. NZ Health, Waikato, New Zealand
3. Wintec - Waikato Institute of Technology, New Zealand

**BM0114-A**

Developing an Automated System for Organ Transplantation Crossmatch Experiment Interpretation

**Guan-Yi Zhou**, En-Hsun Cheng and Tzu-Hsien Yang  
National Cheng Kung University, Taiwan

**BM0125**

Develop a Real Time Necrotizing Fasciitis Identification Model to Enhance Clinical Diagnosis Efficiency and Accuracy in Computed Tomography Images

**Pei Yi Chen**, Tzu-Lun Kao, Ming-Chuan Chiu, Chun-Chia Chen and Heng-Yu Lin  
National Tsing Hua University, Taiwan

**BM0189-A**

Integrated Spatial Accessibility Assessment of Post-Acute Rehabilitation Wards and Community-Based Day Rehabilitation Services in Hokkaido, Japan: Quantifying Medical-Long-Term Care Continuity Gaps Using the Two-Step Floating Catchment Area Method

**Naomichi Saito**<sup>1</sup>, Kazuki Ohashi<sup>2</sup>, Kensuke Fujiwara<sup>3</sup>, Rie Tachibana<sup>1</sup> and Katsuhiko Ogasawara<sup>1,2</sup>  
1: Muroran Institute of Technology, Japan  
2: Hokkaido University, Japan  
3: Otaru University of Commerce, Japan

# Poster Oral Session 6

## Immersive AI for Next-Generation Patient Care

15:45-16:10, GMT+9 | May 16, 2026 Saturday

Venue: Foyer, the 4<sup>th</sup> floor

Chaired by:



**Dr. Shih-Ying Chien**

**Chang Gung University, Taiwan**

### BM0065-A

DISCUSS: A Secure Inpatient Proxy Communication Platform – Design, Implementation Framework, and Evaluation Protocol, A Multi-Phase Mixed-Methods Study in a Community Hospital Environment

**Kai Feng Yam** and Alvin Cong Wei Ong  
Jurong Community Hospital, Singapore

### BM0076-A

Objective Post-Mastication Evaluation System for Assessing Comminution and Mixing Ability

**Long Hoang Bach** and Wann-Yun Shieh  
Chang Gung University

### BM0096

EEG Scalp Topographic Heatmaps for Autism Spectrum Disorder Detection Using EfficientNetV2S and MobileNetV2

**Melinda Melinda**<sup>1</sup>, Hilmi<sup>1</sup>, Muhammad Saifullah Nur<sup>1</sup>, W. K. Wong<sup>2</sup>, Afnan Afnan<sup>1</sup>, Yunidar Yunidar<sup>1</sup>, Syahrul Gazali<sup>1</sup> and Mulyadi Mulyadi<sup>1</sup>

1. Universitas Syiah Kuala, Indonesia

2. Curtin University, Malaysia

**BM0116**

Immersiveness Matters: Raising Impact in a Gamified Nutrition App For The Prevention of NCDs via Virtual Reality (VR)

**Christoph Aigner**<sup>1</sup>, Stephan Matiasch<sup>1</sup>, Sylvia Winkler<sup>2</sup>, Katharina Weindl<sup>3</sup>, Thomas Grechenig<sup>4</sup> and René Baranyi<sup>1</sup>

1. Technical University of Vienna, Austria
2. Research Industrial Systems Engineering (RISE), Austria
3. Science & Research Institute for Industrial Software (INSO), Austria
4. Sanskrithi School of Engineering, Puttaparthi, India

**BM0185**

Trust and Adoption Intention for AI-Personalized Medical Treatment Plans: Evidence from the National Capital Region (NCR), Philippines

**Ma. Janice Gumasing**

De La Salle University, Philippines

# Poster Oral Session 7

## Digital Health and Health Services Management

16:10-16:40, GMT+9 | May 16, 2026 Saturday

Venue: Foyer, the 4<sup>th</sup> floor

Chaired by:



**Dr. Dilruba İzgüden**

**Süleyman Demirel University, Türkiye**

### BM0011-A

Artificial Intelligence-Based Patient Flow Management: The “Neyim Var?” Application in Türkiye

**Dilruba İzgüden**, Havva Ceylan and Aynur Toraman  
Suleyman Demirel University, Türkiye

### BM0012-A

Clinical Decision Support Systems in Patient Safety: A Case Study of Hospital Automation in Türkiye

**Aynur Toraman**, Dilruba İzgüden and Havva Ceylan  
Suleyman Demirel University, Türkiye

### BM0013-A

Continuous Glucose Monitoring Systems in Diabetes Management: A Comparative Study of Practices in Türkiye and Japan

Havva Ceylan, Aynur Toraman and Dilruba İzgüden  
Suleyman Demirel University, Türkiye

### BM0016-A

## Causes, Consequences and Proposed Solutions of Medical Deserts

Sıddıka Çam<sup>1</sup> and Erdal Eke<sup>2</sup>

1: Burdur Mehmet Akif Ersoy University, Türkiye

2: Suleyman Demirel University, Türkiye

### **BM0103-A**

Three Country Models in Home Care: A Comparative Study of Poland, Finland and Türkiye

**Nurten Terkes<sup>1</sup>**, Nurdan Oral Kara<sup>1</sup> and Iwona Debinska<sup>2</sup>

1;Burdur Mehmet Akif Ersoy University, Türkiye

2:John Paul II Catholic University of Lublin, Poland

### **BM0017-A**

An International Comparison of the Relationship Between Smart City Applications and Healthy Living:  
The Cases of Turkey and Japan

Merve Tavukcu and Erdal Eke

Suleyman Demirel University, Türkiye

# Online Session

## Frontiers in Patient-Centric Decision Intelligence

10:30-13:06, **GMT+9** | May 17, 2026 Sunday

Zoom ID: 865 4301 2912

Chaired by:



**Dr. Chi-Hua Tung**

**Fu Jen Catholic University, Taiwan**

**10:30-10:42**

**BM0015**

Risks Management in AI-powered healthcare information systems

Dmitri Kharchevnikov<sup>1</sup> and **Nikolay Lipskiy**<sup>2</sup>

1: Great Falls College – Montana State University, USA

2: Center for Applied Medical AI (CAMA), USA

**10:42-10:54**

**BM0083**

A Framework to Integrate ChatGPT Into the Pepper Humanoid Robot for Seamless Human–Robot Interaction Studies

Fahim Shahriar, Md Tousif Tanjim Anan, Zannatul Ferdousee, Jace Rudolph, Sifat Wahid, Momen Bhuiyan and **Arshia Khan**

University of Minnesota Duluth, USA

**10:54-11:06**

**BM0029**

Unsupervised Identification and Cross-Data-Source Portability of Bleeding Phenotypes in Acute Leukemia Across Multinational RCT and EHR Data

**Maryam Akbari-Moghaddam**<sup>1</sup>, Nancy M. Heddle<sup>1</sup>, Shannon Lane<sup>1</sup>, Yang Liu<sup>1</sup>, Simon Stanworth<sup>2</sup>, Erica M. Wood<sup>3</sup> and Na Li<sup>4</sup>

- 1: McMaster University, Canada
- 2: University of Oxford, NHS Blood and Transplant, and Oxford University Hospitals NHS Foundation Trust, UK
- 3: Monash University and Monash Health, Australia
- 4: McMaster University and University of Calgary, Canada

**11:06-11:18**
**BM0054**

A Lightweight Narrative-Analytics Framework for Early Outbreak Detection: Integrating Social-Media Signals and Time-Series Methods in a Yearlong Measles Case Study

**Andy Skumanich**<sup>1</sup>, Han Kyul Kim<sup>2</sup>, Ting Jui Huang<sup>3</sup> and Hande McGinty<sup>4</sup>

- 1: Innov8ai Inc., USA
- 2: University of Southern California, USA
- 3: Kansas State University, USA
- 4: University of California Berkeley, USA

**11:18-11:30**
**BM0084**

A Mobile-Based Stress Tracking and Support System for Dementia Caregivers

Yagna Manasa, Maggie Beach and **Arshia Khan**

University of Minnesota Duluth, USA

**11:30-11:42**
**BM0164**

Artificial Intelligence in CT Detection and Risk Assessment of Small Pulmonary Nodules: Workflow Integration, Limitations, and Future Directions

**Yuanchunsu Tan** and Jian Liu

Department of Radiology, The Third People's Hospital of Chengdu/ The Affiliated Hospital of Southwest Jiaotong University, China

**11:42-11:54**
**BM0202**

An Inductive NMF Framework for Cold-Start Drug–Target Interaction Prediction

**Siying Shen** and Yongxia Yang

Guangdong Pharmaceutical University, China

**11:54-12:06**
**BM0214**

From User Feedback to Iterative Decision-Making: A Low-burden Multi-Channel Feedback Framework for Mobile Health Applications Targeting Non-Communicable Diseases

**Yuyu He**, William Yu Chung Wang and Arnob Zahid

Waikato Management School, University of Waikato, New Zealand

**12:06-12:18**
**BM0060**

C-SDM: An Interoperable Data Model for Health and Social care

**Subhashis Das**, Debashis Naskar and Sara Rodríguez González

University of Salamanca, Spain

**12:18-12:30**
**BM0178**

Health Forensics 5.0: A Bibliometric Analysis of Metaverse-Based Healthcare Applications and Forensic Informatics Risks

**Melike Kukut** and Zümürüt Ecevit Satı

Istanbul University, Istanbul, Türkiye

**12:30-12:42**
**BM0217**

A Machine Learning–Based Framework for Discovering Huntington’s Disease Stages: Integrating Graph Representation Learning and clustering to Uncover Progression Dynamics in Longitudinal Enroll-HD Dataset

**Lubna Abu Zohair**, Marta Vallejo, Md Azher Uddin, John Woodward and Hind Zantout

Heriot-Watt University, United Arab Emirates

**12:42-12:54**
**BM0176**

A Multimodal Approach to Monitoring Systemic Lupus Erythematosus Using Ocular Fundus Imaging and Interferon-Signature Transcriptomics

**Thomas Danjo M.Manulat**, Malt John Vianney C.Solon, Simon Lyster P.Escano and Kaye Aizerner Evangelista

Cebu Institute of Technology – University, Philippines

12:54-13:06

BM0209

Knowledge Graph-Based Exercise-Sensitive Nutrition Recommendation System

**Siwei Liu**<sup>1</sup> and Sen Liang<sup>2</sup>

1: Beijing National Day School, China

2: Microsoft, Beijing, China

# Conference History

- ICMHI 2017 | 2017.5.20-22 Taichung, Taiwan

**Theme: Computational Intelligence Technologies Meets Medical Informatics -From Prediction to Prognosis**

- ICMHI 2018 | 2018.6.8-10 Tsukuba, Japan

**Theme: Seamless Ubiquitous Information Technologies and Applications over the Evolution of Medical Informatics**

- ICMHI 2019 | 2019.5.17-19 Xiamen, China

**Theme: Healthy data put to good use for better integrated care**

- ICMHI 2020 | 2020.8.14-16 Virtual Conference

**Theme: Medical Informatics Meets Quality Health Care -From Prediction to Prognosis**

- ICMHI 2021 | 2021.5.14-16 Virtual Conference

**Theme: Accelerating the Evolution of the Whole-evidence Approach to Promote Health**

- ICMHI 2022 | 2022.5.13-15 Virtual Conference

**Theme: Validation, Let the evidence speak!**

- **ICMHI 2023 | 2023.5.12-14 Kyoto, Japan**

**Theme: The Future of Digital Health in the Post-Pandemic**

- **ICMHI 2024 | 2024.5.17-19 Yokohama, Japan**

**Theme: Beyond the Future Healthcare Delivery**

- **ICMHI 2025 | 2025.5.16-18 Kyoto, Japan**

**Theme: Advancing the Art and Science of Medical Informatics  
with Digital Innovation**

# One Day Visit

May 17, 2026. (Sunday) 9:00~18:00

*(Tip: Please arrive at KRP at 9:00 a.m. The following places are for reference, and the final schedule should be adjusted to the actual notice. Lunch is at your own expense)*

**\*Only available to registered attendees.**

## Morning Visit



### Arashiyama

Arashiyama is a district on the western outskirts of Kyoto, Japan. It also refers to the mountain across the Ōi River, which forms a backdrop to the district. Arashiyama is a nationally designated historic site and place of scenic beauty.

The Iwatayama Monkey Park on the slopes of Arashiyama. Over 170 monkeys live at the park. While the monkeys are wild, they have become accustomed to humans. The park is on a small mountain not far from the Saga-Arashiyama rail station. Visitors can approach and photograph the monkeys. At the summit is a fenced enclosure where visitors can feed the monkeys. The Moon Crossing Bridge, notable for its views of cherry blossoms and autumn colors on the slopes of Arashiyama.

## The Heian Shrine

The Heian Shrine is a Shinto shrine located in Sakyō-ku, Kyoto, Japan. The Shrine is ranked



as a Beppyo Jinja (the top rank for shrines) by the Association of Shinto Shrines. It is listed as an important cultural property of Japan. The architecture design was a reproduction of the Chōdōin (Emperor's palace in the former eras) in 5/8th scale (in length). The large red entrance gate is a reproduction of the Outenmon of the

Chōdōin. The architecture of the main palace mirrors the style and features of the Kyoto Imperial Palace, the style from the 11th–12th century (late Heian Period). The Shrine's torii is one of the largest in Japan.

## Kiyomizu-dera



Kiyomizudera is one of the most celebrated temples of Japan. It was founded in 780 on the site of the Otowa Waterfall in the wooded hills east of Kyoto, and derives its name from the fall's pure waters. The temple was originally associated with the Hosso sect, one of the oldest schools within Japanese Buddhism, but formed its own Kita Hosso sect in 1965. In 1994, the temple was added to the list of UNESCO world

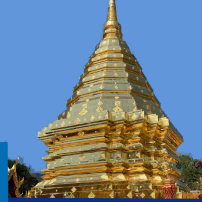
heritage sites. Kiyomizudera is best known for its wooden stage that juts out from its main hall, 13 meters above the hillside. The stage affords nice views of the numerous cherry and maple trees below that erupt in a sea of color in spring and fall, as well as of the city of Kyoto in the distance. The main hall, which together with the stage was built without the use of nails, houses the temple's primary object of worship, a small statue of the eleven faced, thousand armed Kannon.

**(18:00) Back to KRP.**

# ICHSM 2027

## 2027 10th International Conference on Healthcare Service Management

Theme: A Decade of Excellence: Innovating Healthcare for Human Civilization



January 8-10, 2027 | Faculty of Medicine, Chiang Mai University, Thailand

Conference Website  
<https://ichsm.org>

Welcome to the 2027 10th International Conference on Healthcare Service Management (ICHSM 2027), a premier gathering of healthcare professionals, researchers, technologists, and industry leaders dedicated to exploring the dynamic intersection of healthcare service management and cutting-edge technology. The international event will be held in Faculty of Medicine, Chiang Mai University, Thailand during January 8-10, 2027. As we convene here today, we embark on a journey to delve into the transformative power of digital innovation in reshaping the landscape of healthcare delivery. The accepted and registered papers of ICHSM 2027 will be published into international Conference Proceedings, which will be sent to Ei Compendex and Scopus for indexing.

### Call For Papers:

- *Healthcare Management*
- *Health Policy and Practice*
- *Health Tourism Applications*
- *Big Data for Healthcare Practices Occupational Treatment*
- *Collaboration Technologies for Healthcare*
- *Survival Analysis & Health Hazard*
- *Personalized Health Promotion*
- *Psychiatric and Mental Health Nursing*
- *Epidemiological Modeling*
- *Health Informatics Education*

Submission



More topics: <https://ichsm.org/cfp.html>

## Conference History

<b>ICHSM 2018</b> 2018.06.08-10	<b>Theme: Seamless Ubiquitous Information Technologies and Applications over the Evolution of Medical Informatics</b> ACM Proceeding (ISBN: 978-1-4503-6435-5)-indexed by Ei Compendex and Scopus
<b>ICHSM 2019</b> 2019.05.17-19	<b>Theme: Healthy data put to good use for better integrated care</b> ACM Proceeding (ISBN: 978-1-4503-7199-5)-indexed by Ei Compendex and Scopus
<b>ICHSM 2020</b> 2020.08.14-16	<b>Theme: Health Informatics Vision: Empowering Ecosystem Services throughout the World</b> ACM Proceeding (ISBN: 978-1-4503-7776-8)-indexed by Ei Compendex and Scopus
<b>ICHSM 2021</b> 2021.05.14-16	<b>Theme: Accelerating the Evolution of the Whole-evidence Approach to Promote Health</b> ACM Proceeding (ISBN: 978-1-4503-8984-6)-indexed by Ei Compendex and Scopus
<b>ICHSM 2022</b> 2022.05.13-15	<b>Theme: Validation, Let the evidence speak!</b> ACM Proceeding (ISBN: 978-1-4503-9630-1)-indexed by Ei Compendex and Scopus
<b>ICHSM 2023</b> 2023.05.12-14	<b>Theme: The Future of Digital Health in the Post-Pandemic</b> ACM Proceeding (ISBN: 979-8-4007-0071-2)-indexed by Ei Compendex and Scopus
<b>ICHSM 2024</b> 2024.09.06-08	<b>Theme: Beyond the Future Healthcare Service</b> ACM Proceeding (ISBN: 979-8-4007-1016-2)-indexed by Ei Compendex and Scopus
<b>ICHSM 2025</b> 2025.08.06-08	<b>Theme: Future-Proofing Digital Health for Always-On Care</b> ICHSM 2025 papers were scheduled for publication in a journal or the 2026 IOS conference proceedings.
<b>ICHSM 2026</b> 2026.09.24-26	<b>Theme: Inspiring a New Spirit: Global Collaboration for Sustainable Health</b>

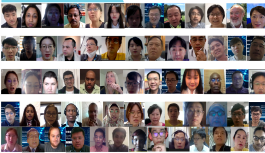
ICHSM 2018 Tsukuba, Japan



ICHSM 2019 Xiamen, China



ICHSM 2020 VIRTUAL



ICHSM 2021 VIRTUAL



ICHSM 2022 VIRTUAL



ICHSM 2023 Kyoto, Japan



ICHSM 2024 Istanbul, Turkey



ICHSM 2025 Istanbul, Turkey



Organized by  中山醫學大學 Chung Shan Medical University  中山醫學大學附設醫院 Chung Shan Medical University Hospital

Hosted by  

Co-organized by  

Supported by               

# Note